

1/481 Victoria Street, Abbotsford, Vic 3067

Townhouse For Sale

Saturday, 3 February 2024

1/481 Victoria Street, Abbotsford, Vic 3067

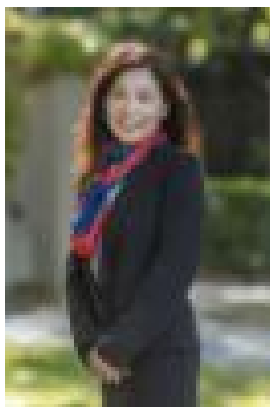
Bedrooms: 3

Bathrooms: 2

Parkings: 2

Area: 420 m2

Type: Townhouse



Jessica Wat
0422881301



Toni El-Helou
0398820033

Contact Agent

Showcasing unprecedented space over two amazing levels, magnificent city views you will never get tired of, 5 separate alfresco areas, and the perfect Victoria Street location where you're a short walk to fantastic restaurants and trams at your door, this 3-bedroom, 2.5 bathroom penthouse is unmissable! You'll be absolutely mesmerised by the space that this home offers (420 sqm approx. total!), with the first floor reserved for the expansive living zone which is split into a large family room, dining area, and inviting lounge room. This area has access out to 3 amazing alfresco spaces, including 2 separate balconies at the north and south ends of the property, while a courtyard separates the family and lounge rooms as is perfect for outdoor dinners when the weather is warm. The kitchen delights with beautiful stone along with an extended island bench, an abundance of counter space and storage options, and premium stainless steel appliances. On the top floor, make the most of all 3 oversized bedrooms which includes the terrific master bedroom which boasts a sleek ensuite, walk-in robe storage, and access out to another balcony. The top floor also delivers a study nook, dual access twin vanity bathroom, and another north-facing balcony. The balconies are the best spots to soak in the wonderful CBD views! Other features include a first floor powder room, laundry room, reverse cycle heating and cooling, lift access to all level, and a double remote garage with storage. You won't be short of eateries, bars, and cafes on Victoria Street, with Victoria Gardens Shopping Centre also down the road. You're also near Main Yarra Trail and gorgeous riverside parklands, Bridge Road shops, Gleadell Street Market every Saturday, Richmond Traders, Abbotsford Primary School, Richmond High School, Melbourne Girls' College, and North Richmond Station.