

1/5 Emilija Court, Marshall, Vic 3216



Sold House

Wednesday, 4 October 2023

1/5 Emilija Court, Marshall, Vic 3216

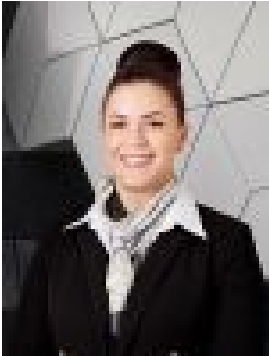
Bedrooms: 3

Bathrooms: 2

Parkings: 2

Area: 303 m2

Type: House



Nikolett Pesti
0352411331



Adam Natonewski
0352411331

Contact agent

Nestled at the end of a peaceful cul-de-sac, this 3-bedroom, 2-bathroom gem offers the ideal blend of comfort and style. With a refreshing blend of features, this home is your perfect retreat from the bustle of everyday life. Large windows create a welcoming ambiance, looking out to the property's low maintenance gardens, presenting the perfect setting for relaxation and entertainment all year round. Exuding a tasteful design and modern interiors, the spacious home offers a sunny large living area, dining zone and a well-appointed kitchen. A breakfast bar provides space for a quick casual meal, while stainless steel appliances and ample cabinetry deliver functional hosting requirements. Complete with split-system heating and air conditioning, the home's generous proportions continue across the three bedroom accommodation, where the master bedroom with built in robe and ensuite complement two further bedrooms and a central bathroom. With immaculate presentation and a solid foundation and the convenience of a 2-car garage ensures your vehicles are well-protected and your storage needs are met. On it's own title, this peaceful home is sure to impress. Located only minutes away from Marshall Train Station, township including shops, bus stations and local parks. Minutes to the motorway, local schools and leisure centres. Zoned for Grovedale Primary School and Grovedale College.