

1/55 Dunbarton Drive, Wantirna, Vic 3152



Sold Townhouse

Thursday, 24 August 2023

1/55 Dunbarton Drive, Wantirna, Vic 3152

Bedrooms: 4

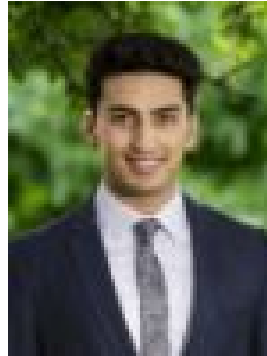
Bathrooms: 3

Parkings: 2

Type: Townhouse



Vivian Li
0398002222



Amir Hashemi
0412008721

\$1,130,500

The Property Discover the epitome of functionality and comfort in this freshly built rendered brick, double-storey townhouse. Its design ensures a blend of space, convenience and functionality, accommodating a modern family's needs. Nestled in the heart of Wantirna, this residence stands as an inviting testament to well-thought-out living spaces and thorough craftsmanship. The Features Upon entering, be greeted by the expansive open plan space that seamlessly combines the kitchen, dining, and living areas. The kitchen has key appeal in this environment, enticing with its walk-in pantry and a functional island bench. This main area further extends, opening onto a welcoming patio - perfect for gatherings and relaxation and a garden with a shed, gated off from the front yard for privacy. The four bedrooms and three bathrooms cater to both privacy and luxury. Two carpeted bedrooms, including the main, are adorned with walk-in robes leading to ensuites. The remaining two bedrooms feature built-in robes and are comfortably carpeted. The main bathroom is large, with heated towel rail and well appointed with its floor-to-ceiling tiles. All bathrooms boast modern tiling, and invigorating rain showers. Other notable features include sturdy engineering floorboards, tall ceilings for a sense of spaciousness, ducted heating, refrigerated cooling (zoned) and a water tank. A walk-in double garage guarantees shelter from the elements before and after the commute, accessed via a dedicated laundry. The Location The locale is a blend of convenience and leisure. Take short walks to the local shops on Stud Road or enjoy the nearby parks for a dose of greenery. For broader shopping needs, Westfield Knox and Studfield shops are a brief drive away. Connectivity isn't an issue either, with Bayswater Station close by. Families will appreciate the proximity to Regency Park Primary School, Templeton Primary School, Wantirna College and Swinburne Wantirna. Auction : Saturday 25th November at 5pm