

**1/58-70 Passendale Road, Edmondson Park, NSW**

**2174**

**Sold Apartment**

Wednesday, 6 September 2023

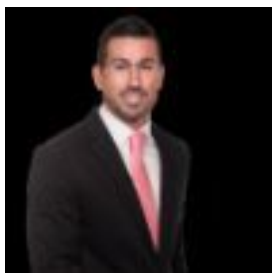
1/58-70 Passendale Road, Edmondson Park, NSW 2174

**Bedrooms: 2**

**Bathrooms: 2**

**Parkings: 2**

**Type: Apartment**



Shannon McDonnell  
0434900224



Thomas Short  
0450875073

**\$710,000**

Discover contemporary living in this nearly new, two-bedroom ground floor unit. Immerse yourself in the sleek modern finishes that grace every corner of this space, complemented by a sun-soaked, expansive layout and a low-maintenance tiled courtyard. Perfectly positioned, it's a short walk to local schools, shops, and the train station. INCLUSIONS - Two bedrooms with built-in robes- Main bedroom with ensuite- Bright combined lounge and dining area featuring downlights- Contemporary kitchen with stainless steel appliances and gas cooktop- Stylish bathroom with floor-to-ceiling tiles and floating vanity- Split system air conditioning for ultimate comfort- Convenient internal laundry- Low-maintenance tiled courtyard and backyard- Underground double car space with additional storage- Approx. 800m to St Francis Catholic College, 1km to Edmondson Park Station, 1.3km to McDonald's Edmondson Park, 1.1km to Aldi, 1.1km to Clermont Park\*\* We have, in preparing this document, used our best endeavours to ensure that the information contained herein is true and accurate to the best of our knowledge. Prospective purchasers should make their own enquiries to verify the above information.