

**1/6 Edna Street, Heathmont, Vic 3135**



**Townhouse For Sale**

Wednesday, 15 May 2024

1/6 Edna Street, Heathmont, Vic 3135

**Bedrooms: 2**

**Bathrooms: 1**

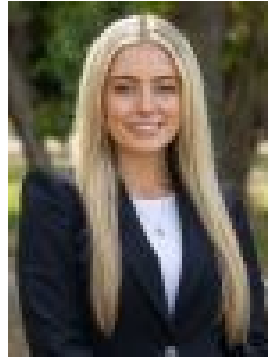
**Parkings: 1**

**Area: 450 m2**

**Type: Townhouse**



Marcus Lim  
0433044038



Ella Rait  
0424669181

**\$720,000 - \$770,000**

Character filled and conveniently positioned, this single level unit is ideal for those starting out, scaling down or simply investing, with its low-maintenance layout and perfect placement, moments from Aquanation, Jubilee Park, Heathmont Station and Heathmont Village. Lovingly presented throughout, the home's shimmering polished floorboards create a welcome entry, leading through to a gorgeous lounge room that's focused around a romantic open fireplace. A beautiful timber lintel adorns the entry to the kitchen and meals zone, beautifully appointed with tiled splashbacks, stainless steel appliances plus a corner pantry, with sliding doors leading out onto the covered entertaining deck and easy-care backyard, complete with a swing for the kids! Both bedrooms feature polished floorboards and include built-in robes plus ceiling fans, accompanied by a modern bathroom, separate toilet, mudroom and laundry. Creature comforts are taken care of thanks to the inclusion of ducted heating, split system air conditioning, high ceilings, wall mounted clothesline, garden shed plus a single carport. As for the location, you'll find yourself within easy walking distance to buses, Heathmont Train Station, Heathmont Village shops and cafes, reserves, Jubilee Park, Aquanation Leisure Centre, Great Ryrie Primary School, Aquinas College, Ringwood Secondary College zone, Heathmont College, as well as being close to Ringwood Golf Club, Eastland Shopping Centre plus Eastlink.