

1/6 Patmore Court, Mill Park, Vic 3082



Unit For Sale

Thursday, 13 June 2024

1/6 Patmore Court, Mill Park, Vic 3082

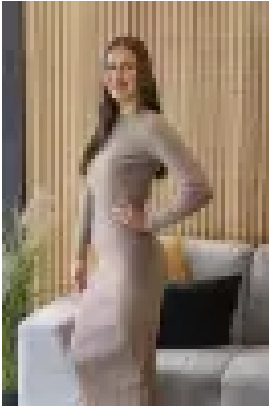
Bedrooms: 2

Bathrooms: 1

Parkings: 2

Area: 257 m2

Type: Unit



Imogen Hammond
0391111707



Jay Moxon
0391111707

ESR: \$500,000 - \$550,000

Ideally situated in a highly sought-after locale, within moments from The Stables and Westfield Plenty Valley Shopping Centre's, South Morang and Epping Train Stations, reputable schools and gorgeous parklands, this fully renovated gem is immaculately presented throughout and will be sure to tick all the boxes. Showcasing two spacious bedrooms, master with walk-in robe, large central bathroom complete with a double shower, a stunning kitchen boasting stone bench tops, high-quality appliances, ample cabinetry and adjacent dining and family areas. Step outside to an impeccable decked outdoor entertainment space and a further grassed area which is ideal for indoor/outdoor living and entertainment all year round. Additional features include the comforts of ducted heating and cooling via split systems, security cameras, alarm system, remote controlled roller shutters, striking flooring, stunning laundry, study nook, landscaped gardens, immaculate presentation throughout and a single garage with additional off-street parking. An opportunity that is not to be missed, inspect today!!!