

**1/60 Durham Road, Kilsyth, Vic 3137**



**Unit For Sale**

Tuesday, 15 August 2023

1/60 Durham Road, Kilsyth, Vic 3137

**Bedrooms: 1**

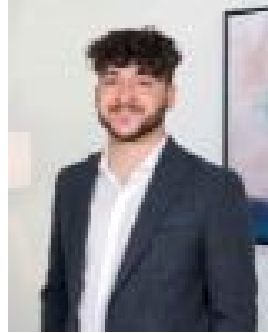
**Bathrooms: 1**

**Parkings: 1**

**Type: Unit**



Ben Hollow  
0425407363



George Brown  
0431458777

**\$585,000 - \$640,000**

Please note all inspections are held in-house at 38-40 McAdam Square, Croydon. Contact Agent for further information. Introducing a ground-breaking, green, single-level unit development that raises the bar for environmental design and sustainability in greater Melbourne. This 7-star four-home project leads the way in innovative eco-friendly living, blending modern architecture with ecological consciousness. Experience nature's embrace with homes that bring the outdoors inside through expansive windows, where the quality construction takes centre stage. Surpassing industry standards, the all-electric, battery-ready homes will utilise 10kW solar systems and around 13kW of solar panels per dwelling. Harnessing the sun's power, they will generate abundant electricity, meeting owners' lifestyle needs, charging electric vehicles and earning credits by contributing surplus energy to the grid. Panels will face east and west, capturing morning rays through until the sun sets. Meticulously planned, the homes will feature 9ft tall ceilings, electric vehicle fast chargers, premium Australian-made windows and sliding doors with low-e double glazing, water tanks and automated watering systems. Distinguishable features of Home 4 include open plan living/dining, kitchen with electric appliances, stone benchtops and a walk-in pantry, one bedroom with a walk-in wardrobe, ensuite bathroom with a stone-top vanity, semi-frameless shower and a heated towel rail, European laundry, Merbau deck with pergola, plus a single garage with internal access. The property is situated within close proximity to Mooroolbark and Croydon train stations, bus stops, Eastlink, a variety of parks and recreational facilities, plus a number of shopping options including Churinga, Croydon, Chirnside Park and Eastland shopping centres. It is also close to popular educational facilities including Japara Living & Learning Centre, Hansen Park Preschool, St Richards Primary School, Kilsyth Primary School, Gladesville Primary School, Yarra Hills Secondary College, Mooroolbark College and Billanook College. Secure this home today, enjoy stamp duty savings and the freedom to personalise floor coverings, tiles, fittings and colours if purchased before the frames are erected. Plus, receive \$300 to spend at Beacon Lighting, allowing you to customise pendant lights above your kitchen island bench. Every precaution has been taken to establish the accuracy of this information. Buyers to make own enquiries.