

1/7 Annandale Street, Darling Point, NSW 2027

PPD REALESTATE

Apartment For Sale

Saturday, 13 January 2024

1/7 Annandale Street, Darling Point, NSW 2027

Bedrooms: 2

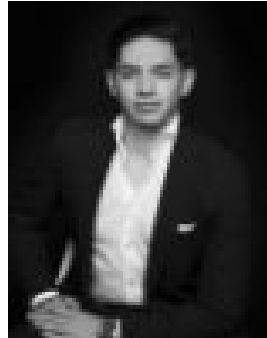
Bathrooms: 1

Parkings: 2

Type: Apartment



Sean Poche
0433011576



Nate Chacon
0412972705

Auction 10 February

The creative redesign of this house-like harbourside apartment delivers inventive solutions to light and volume, with sightlines and views enhancing the sense of space to create an exceptional contemporary peninsula residence. On the north-east corner of a block of four tucked away in a whisper-quiet street above Rushcutters Bay, the sunlit garden apartment has been newly recreated from a shell with an ingenious design by Rebecca Wood of DRW Architects, that maximises sunlight and functionality of space. Huge steel-framed windows frame alluring views over the harbour and city skyline that are beautiful by day and transform into a dazzling backdrop by night, while a landscaped garden offers a perfect setting for entertaining alfresco. With a private garden entry and no common walls adding to its house-like feel, the two-bedroom plus study apartment comes with double parking including a lock-up garage, and ample in/outdoor living space. Implicit architectural detail is apparent throughout from the full-height pivot doors and Hue lighting scheme, to the luxurious Italian bathroom and state-of-the-art kitchen to create a home that is not only incredibly stylish, but a joy to live in. Stroll down to the picturesque harbour foreshore and CYC or to McKell Park ferry wharf for a relaxed commute to the city.

- Semi-like apartment in a block of 4
- Prized NE aspect, alluring harbour views
- Spotted Gum floors and custom joinery
- 2 double bedrooms with built-in robes
- Sunroom/study, steel-framed windows
- Open plan living/dining, media credenza
- Venetian plaster walls, ducted VRV air
- Bespoke kitchen, natural stone benchtops
- Top of the range Miele appliances, induction cooktop
- Qasair range and soft-close cabinetry
- Integrated Liebherr fridge, filtered water
- Landscaped garden with a dining terrace
- Luxurious bathroom, Agape appointments
- Freestanding bath, frameless glass shower
- Heated towel rails on timer
- Elba slabstone floor with underfloor heating
- Custom-fitted laundry, extensive storage
- Gubi and George Nelson pendant lights
- Modular lights on Hue lighting control system
- Olivari hardware and Brodware tapware
- Automated Markilux shade awning
- Auto irrigation system
- Lock-up garage plus off-street parking
- 400m to the CYC and Rushcutters Bay Park
- 550m to Richie's Cafe, 800m to Edgecliff station