

1/70-72 Princes Highway, Beverley Park, NSW 2217



Unit For Rent

Wednesday, 24 April 2024

1/70-72 Princes Highway, Beverley Park, NSW 2217

Bedrooms: 2

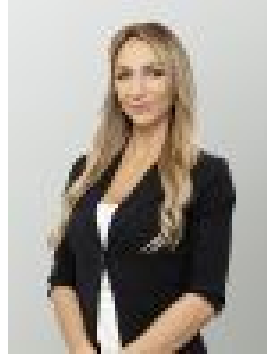
Bathrooms: 1

Parkings: 1

Type: Unit



Amani Haragli
0295883455



Vicky Karakatsis
0272291207

\$500

Perfectly located, cosy 2 bedroom unit positioned close to public transport, hospitals, shops & cafes. Features Include :
* Freshly painted* Tidy kitchen with ample storage* Spacious lounge/dining area* Neat bathroom* Sunny balcony* Lock up garage* Perfectly located*** TO INSPECT THIS PROPERTY YOU MUST REGISTER YOUR INTEREST ***Registering allows us to advise you of time changes and cancellations