

1/70 Turner Road, Highett, Vic 3190

buxton

Sold Unit

Thursday, 15 February 2024

1/70 Turner Road, Highett, Vic 3190

Bedrooms: 2

Bathrooms: 1

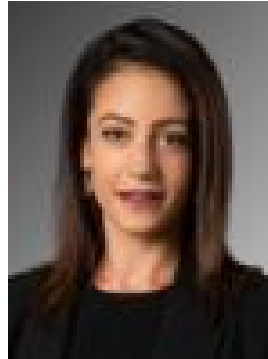
Parkings: 1

Area: 186 m2

Type: Unit



Paul Sibley
0395550622



Natalie Falvo
0421981447

\$950,000

Are you dreaming of owning a low maintenance home with a white picket fence? Well look no further, as this gorgeous, street-fronted unit with no body corporate is simply perfect for first home buyers, downsizers and investors. Beautifully presented and well-located just a stone's throw away from all amenities, this sensational unit is only minutes from Westfield Southland, train station, public transport, cafes, schools and shops. Smell the roses as you walk up your own private driveway to the covered porch. Inside is a light filled lounge room with sliding door access to a paved courtyard. The spacious kitchen with stainless steel appliances includes a dishwasher and pantry. There's also 2 robed bedrooms including the master with ensuite and walk in robe, open meals area, fresh bathroom and internal access to the automated lock-up garage. Other highlights include ducted heating, evaporative cooling, cloak closet and security doors. Hurry an inspection will delight!