

1/74 Clive Street, Shepparton, Vic 3630



Unit For Rent

Friday, 19 April 2024

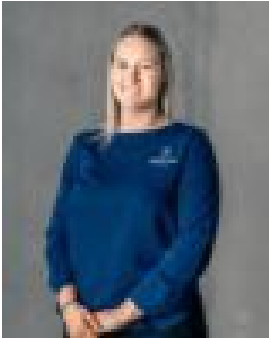
1/74 Clive Street, Shepparton, Vic 3630

Bedrooms: 2

Bathrooms: 1

Parkings: 1

Type: Unit



Chloe Earle
0358311800

\$400 pw

Positioned in the Sensational Central Shepparton Location is this wonderfully kept unit. Comprising of 2 bedrooms with ample cupboard space, a spacious living area, ducted cooling, split system in the living area. Main bathroom with separate toilet and a large kitchen/meals area with gas cooktop & access to your private courtyard with garden shed. This property is walking distance to Deakin Reserve, Notre Dame College, St Brendan's Primary School and Shepparton CBD. A single garage completes this home. 12 month lease. Not suitable for pets.**** Please send through an online enquiry & we will email you an application form.