

1/8-10 Holdsworth Court, Norlane, Vic 3214



Unit For Sale

Wednesday, 12 June 2024

1/8-10 Holdsworth Court, Norlane, Vic 3214

Bedrooms: 2

Bathrooms: 1

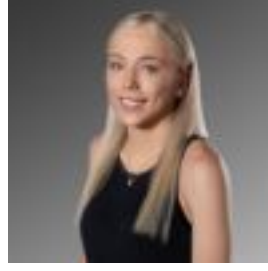
Parkings: 1

Area: 193 m2

Type: Unit



Stew Farrell
0352018070



Tahlia Adams
0400546897

\$430,000 - \$470,000

Becoming increasingly harder to find, this charming unit is a fine example of why properties like this are in such high demand. Sharing the block with only three other units, located in a quiet court location, and having been updated over time, it's the ultimate set and forget investment, first home or downsizer. Comprised of:

- Two spacious bedrooms, one with a walk-in robe, the other with built in robes.
- Updated, well-appointed kitchen featuring a walk-in pantry, attractive cabinetry and breakfast bar.
- Renovated bathroom with separate toilet.
- Good-sized laundry leading to the rear yard.
- Comfortable and light filled lounge room with heating and air conditioning.
- Single car garage, additional off-street car space and workshop.

Only minutes to the Bell Post Hill Shopping Centre, local public transport, schools and childcare and surrounded by walking trails and parkland, it's a gem of a property in an unbeatable location.