

1/83 Copeland St, Penrith, NSW 2750

Unit For Rent

Monday, 22 April 2024

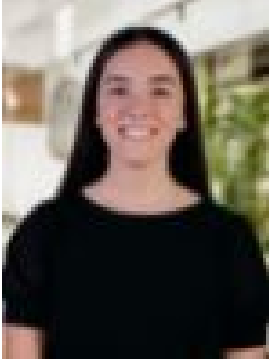
1/83 Copeland St, Penrith, NSW 2750

Bedrooms: 2

Bathrooms: 2

Parkings: 1

Type: Unit



Gabrielle Gattellari
0429915486



Madison Naylor
0447530707

\$550 per week

Near new two bedroom apartment in a small boutique complex featuring a roof top terrace with fabulous views over Penrith and to the Blue Mountains. Located walking distance to all amenities including Nepean Hospital & Penrith CBD these stylish apartments feature the following: - Ducted Air conditioning throughout- Mirror built-in robes to both bedrooms- Ensuite bathroom to main bedroom- Quality appliances including dishwasher & clothes dryer- Stone Benchtops- Timber flooring- Bathtub to main bathroom- Floor to ceiling glass- Single underground car space - Storage cage- Large courtyardDisclaimer: We have been furnished with the above information, however, PRD Penrith gives no guarantees, undertakings or warnings concerning the accuracy, completeness or up-to-date nature of the information provided. All interested parties are responsible for their own independent enquiries in order to determine whether or not this information is in fact accurate.