

1/84 Swinburne Street, Lutwyche, Qld 4030



Sold Apartment

Thursday, 5 October 2023

1/84 Swinburne Street, Lutwyche, Qld 4030

Bedrooms: 3

Bathrooms: 1

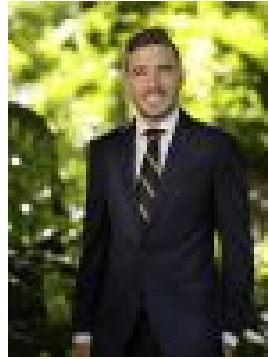
Parkings: 1

Area: 124 m2

Type: Apartment



Tom Murphy
0401312116



Zach Mauger
0733683333

Contact agent

Welcome to 1/84 Swinburne Street, Lutwyche - where the perfect blend of comfort, privacy, and convenience awaits you. This delightful three-bedroom unit is a hidden gem, nestled in a small, well-maintained complex of only five units, offering a serene oasis close to the Kedron Brook Parklands. Available now, this property promises a tranquil lifestyle with modern comforts.

Key Features:

- **Large Covered Entertaining Area:** Step into your own private outdoor sanctuary, complete with a spacious covered entertainment area. It's the ideal place to unwind with friends and family, whether it's a weekend barbecue or a quiet evening under the stars.
- **Fully Fenced Private Yard:** Enjoy the freedom of a fully fenced yard, perfect for kids and pets to play safely, providing a secure space for all to enjoy.
- **Open Plan Living/Dining Area:** The open-concept living and dining area is both welcoming and versatile, featuring air conditioning for year-round comfort.
- **Well-Appointed Kitchen:** The kitchen is a chef's delight with ample storage, a gas stove, and a convenient dishwasher, making meal preparation a breeze.
- **Brand New Bathroom:** Revel in the luxury of a brand-new bathroom, designed with contemporary aesthetics and functionality in mind.
- **Built-In Wardrobes:** The main and second bedrooms come equipped with built-in wardrobes, providing ample storage for your clothing and belongings.
- **Fresh Carpeting:** All three bedrooms have near-new, plush carpeting, ensuring comfort and style in your private spaces.
- **Single Garage with Internal Access:** Park your vehicle with ease in the single garage, offering the convenience of internal access.

Location: Kedron Brook Parklands and Bikeways: Embrace the great outdoors with easy access to Kedron Brook Parklands and Bikeways, perfect for leisurely walks, cycling, and picnics. A short walk to the bus stop provides an effortless commute to the CBD, making work or city adventures easily accessible. Located in the Windsor State School Catchment, families will appreciate the proximity to the sought-after school, ensuring quality education options for your children. Don't miss the opportunity to secure this fantastic three-bedroom unit in the heart of Lutwyche. With its appealing blend of modern amenities and a tranquil setting, this property won't last long. Contact us today to arrange a viewing and make 1/84 Swinburne Street your new home.

**** Disclaimer ****The website may have filtered the property into a price bracket for website functionality purposes. Whilst all reasonable attempts have been made to verify the accuracy of the information provided, the Selling agents confirm that they cannot guarantee accuracy of the same and accept no liability (express or implied) in the event that any information contained in the document or provided within is inaccurate. Parties must ensure they make their own due diligence enquiries to satisfy themselves about the accuracy of the information. This information provided is indicative only and must not be relied upon unless confirmed by a party through their own due diligence.