

1/88 Barries Road, Melton, Vic 3337



Unit For Sale

Wednesday, 10 April 2024

1/88 Barries Road, Melton, Vic 3337

Bedrooms: 2

Bathrooms: 1

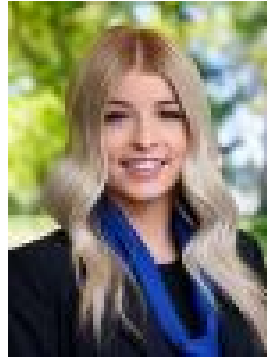
Parkings: 1

Area: 213 m2

Type: Unit



Ryan Anders
0397468899



Britteny Cooke
0426211338

\$379,000 - \$409,000

Situated in the sought after Central Melton this property sits in close proximity to all amenities including: Woodgrove Shopping Centre, all levels of schooling, bus stops, freeway entrance, parks and so much more, this property is the perfect opportunity for all buyers entering the property market and investors alike. Entering the property, you are met with a massive sundrenched lounge room offering plenty of space for the whole family to enjoy. The living area opens into the large sized meals area, which is further complimented by the great sized kitchen, which features plenty of cupboard and bench storage space, gas cooktop and wall oven. On offer in this home is two bedrooms which are both great sized while featuring built in robes and they are also serviced by renovated modern central bathroom. Moving outside, the backyard is generous in size with a huge grassed area providing enough room for the kids/pets to run and play. The potential side access along the home provides a future opportunity to add further accommodation for boats, trailers, caravans and so much more! While the front yard boasts an additional carport/pergola for your entertaining/car storage needs. Additional features include; wall heating unit, split system cooling, secure garage with internal and external access, secure fencing to the whole perimeter, potential side access, no body corporate fees and so much more. Don't miss out on this fantastic unit, so call Ryan today to book your inspection! (Photo ID is Required at all Open For Inspections) At YPA Melton "Our Service Will Move You" **DISCLAIMER:** Every precaution has been taken to establish the accuracy of the above information but it does not constitute any representation by the vendor/ agent and agency.