

1/9 Mount Emerald Street, Park Ridge, Qld 4125



Duplex/Semi-detached For Rent

Monday, 27 May 2024

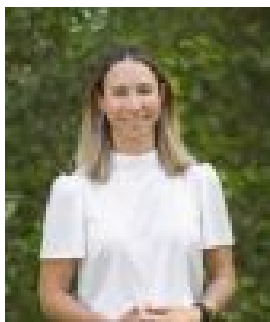
1/9 Mount Emerald Street, Park Ridge, Qld 4125

Bedrooms: 4

Bathrooms: 2

Parkings: 1

Type: Duplex/Semi-detached



Denise Smith
0422348321

\$550 per week

This fabulous home is on offer for rent in a quiet street. Featuring:- 4 Bedrooms, main with ensuite and walk in robe- Open plan - Air-conditioned living with access out to the generous undercover alfresco - Low-maintenance fully-fenced yard- Kitchen is modern in design with ample storage & dishwasher- Ceiling fans & Built in robes throughout - Single remote access garage Central location which is close to a number of schools, shopping centres, restaurants, gyms. RE/MAX Revolution Real Estate has taken all reasonable steps to ensure that the information contained in this advertisement is true and correct but accept no responsibility and disclaim all liability in respect to any errors, omissions, inaccuracies or misstatements contained. Prospective tenants should make their own enquiries to verify the information contained in this advertisement.