

1/9 Ophelia Street, Ferntree Gully, Vic 3156



Townhouse For Sale

Thursday, 4 April 2024

1/9 Ophelia Street, Ferntree Gully, Vic 3156

Bedrooms: 4

Bathrooms: 2

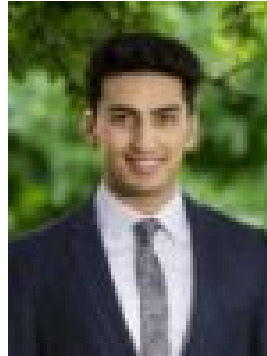
Parkings: 2

Type: Townhouse



Vivian Li

0398002222



Amir Hashemi

0412008721

AUCTION

THE PROPERTY This outstanding townhouse promises spacious comfort, premium inclusions and low maintenance ease, boasting desirable street frontage, a contemporary façade and a bright, modern interior. Designed to accommodate large and growing families, the home comprises dual living plus study, 4 bedrooms, 2 bathrooms and an excellent outdoor entertaining space. Adding further appeal is its convenient positioning near shops, schools, public transport and parks, complemented by the scenic peaks of the Dandenong Ranges.

THE FEATURES Immaculately presented, the home offers two levels of family comfort starting with an easy flow ground floor highlighted by a deluxe master with a walk-in robe and ensuite following through to an expansive open plan living area featuring sliding glass door access to a decked alfresco. Entertain inside and out with the assistance of a stone bench kitchen boasting a Westinghouse oven, Bosch dishwasher and a butler's pantry complete with sink. This lower level is wonderfully finished with a sophisticated powder room and laundry. Zoned for rest, the first floor hosts 3 further bedrooms or can be configured as 2 bedrooms plus a retreat. There is also a spacious study and a shared bathroom featuring ensuite access from one of the rooms. Extras include timber flooring to living areas, carpeted bedrooms, fully tiled bathrooms, Toshiba inverters throughout, understairs storage, alfresco heating panel and café blinds, a water tank, shed and garage with internal access.

THE LOCATION With a friendly suburban feel and the Dandenongs on your doorstep, this locale is second to none. Situated within walking distance to buses, parks, Kent Park Primary and Fairhills High School and enjoying proximity to Heritage College Knox, St Joseph's College, Swinburne University, Mountain Gate Shopping Centre, Westfield Knox, Lakewood Nature Reserve and Ferntree Gully Station. AUCTION - Saturday 27th of April at 2pm