

# 1/90 Dwyer Circuit, Driver, NT 0830



## Sold Unit

Monday, 14 August 2023

1/90 Dwyer Circuit, Driver, NT 0830

Bedrooms: 2

Bathrooms: 1

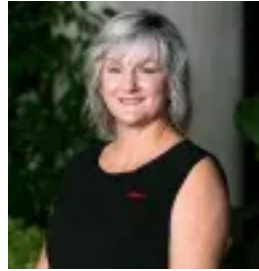
Parkings: 1

Area: 194 m2

Type: Unit



Gennie Cox  
0411151911



Sue Cox  
0889315000

**\$315,000**

• Well presented unit located within walking distance to Palmerston Golf Course, parklands and with the Palmerston shopping centre just minutes away it is perfect for a first home buyer, retiree or investor. • Inside is a central kitchen with both overhead and under-bench storage, double sink plus 2 drawer dishwasher, electric cooktop, under-bench oven and range hood with combined servery / breakfast bar overlooking the open plan and light filled living & dining room. • Modern décor throughout with cool tiled flooring to the living areas and split system air-conditioning. • Two spacious bedrooms with built in wardrobes , slide windows, curtains and carpet floor covering separated by the single bathroom that includes a shower alcove, vanity and WC. • Positioned at the front of a small complex of units it features dedicated parking space, large paved entertaining area and enclosed rear courtyard plus garden or storage shed. • Laundry facilities on the rear verandah, Electric Hot water, security screens on windows and doors, 2 car spaces & NBN Ready . • Currently tenanted until Nov 2022 @ \$305 pw.