

1 Athenry Terrace, Templestowe, Vic 3106

House For Sale

Wednesday, 15 May 2024



1 Athenry Terrace, Templestowe, Vic 3106

Bedrooms: 4

Bathrooms: 2

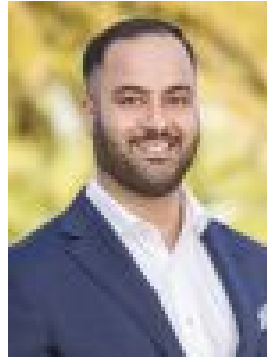
Parkings: 2

Area: 778 m2

Type: House



Scott George
0398428888



Ryan Faridi
0425440505

\$1.05m - \$1.15m

Having provided a flawless family haven for long time owners over many years, the time now for this grand 778 sqm (approx.) property is for new pur-chasers to come in and improve as they see fit. Ideally placed for a top to bottom renovation or as a chance to wipe the slate clean with a brand new build (STCA), this traditionally spacious property brings with it a range of opportunity. Spread over a large, light-filled single level layout, the current residence fea-tures elevated verandahs front and back, beautiful cathedral style timber ceil-ings, open living zones flooded with natural light, a central kitchen with built-in 900mm gas cook top and a stainless steel wall-mounted oven, bedrooms with robes, two bright bathrooms and a matching laundry with built-in storage. Outside a flourishing backyard is ready to provide a private outdoor entertain-ing sanctuary for those ready to transform it, while a storage shed and double garage with workshop are bonuses. Heating, cooling and a feature wood fire place further contribute to an incredi-ble opportunity to make this home your own in a picturesque and private pocket. In the Templestowe Park Primary and Warrandyte High School zones, within walking distance to the Green Gully Trail, a number of parks and The Pines Shopping Centre, close to Westerfolds Park, Templestowe Village shopping and the Manningham Templestowe Leisure Centre, with great connection to Heidelberg-Warrandyte Rd, Blackburn Rd, Reynolds Rd, Williamsons Rd, Manningham Rd, Doncaster Rd, Westfield Doncaster Shoppingtown and the Eastern Freeway.