

# 1 Bailey Crescent, North Epping, NSW 2121



## Sold House

Saturday, 17 February 2024

1 Bailey Crescent, North Epping, NSW 2121

Bedrooms: 6

Bathrooms: 4

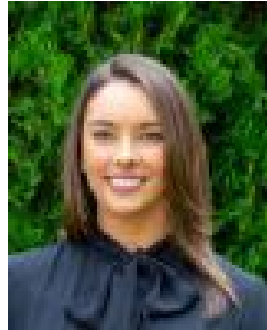
Parkings: 5

Area: 1414 m2

Type: House



Allison Mifsud  
0405138408



Danielle Jenkins  
0459341200

**\$2,550,000**

Welcome to your spacious and contemporary family haven! This renovated and stunning dual-level residence boasts an integrated flat, offering versatility and ample space for the modern family. Step inside to discover a multitude of living areas, perfect for both relaxation and entertaining. Situated on a large level block offering ample room for kids to play and adults to entertain.\* Approx 1414sqm, large level secure yard\* Internal space is a generous 396sqm\* Connected 2-bedroom flat with own entry\* Impressive gas kitchen with island benches\* Open plan living & dining with AC & bamboo flooring\* Additional rumpus room, casual meals + living room\* Oversized theatre room with built in projector & auto screen\* Modern bathrooms, main with spa bath & separate shower\* Solar panels -10KW, auto DLUG + auto driveway gate\* Catchment for Chelt Girls, Epp Boys & Carlingford High\* Walk to Village shops and Epping North Primary school