

1 Baird Street, Eastern Heights, Qld 4305

Sold House

Monday, 23 October 2023



1 Baird Street, Eastern Heights, Qld 4305

Bedrooms: 4

Bathrooms: 1

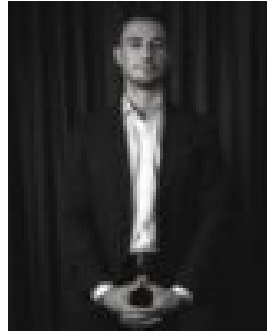
Parkings: 1

Area: 551 m2

Type: House



Charles Kimmorley



Brady Chant
0431966045

\$700,000

Embodying the old-world charm of yesteryear whilst offering every modern convenience you and your family could ever desire, this gorgeous family residence resides in one of Ipswich's most secluded and desirable locations. A true labour of love boasting stunning street appeal framed with lush & established gardens, let this deceptively large residence offer a warm welcome to your forever home...Notoriously known to be one of Ipswich's most prestigious locations, this incredible family residence resides in one of Eastern Height's most sought-after cul-de-sacs. With an open floor plan effortlessly boasting four spacious bedrooms, one central bathroom (two toilets), multiple indoor and scenic outdoor living areas with tranquil and thriving gardens, this house of hidden depths will allow the growing family to flourish. Each bedroom offers deep storage with security, fans & ducted air-conditioning throughout the entire home with a cozy rumpus serviced by the warm brick feature fireplace... Extras to the family home include but are no means limited to; -?Fresh internal & external paint-?Fully furnished-?Spacious bedrooms with deep storage-?Ducted air-conditioning throughout-?Vibrant & lush gardens-?Water Tanks-?Secluded cul-de-sac position surrounded by four friendly neighbours-?Walking distance to Cafes, Schools, Limestone Park - LOCATION! This feature packed family home is located in ever popular Eastern Heights so of course you have access to all the amenities associated with Eastern Heights. These include the Silkstone Shopping Village, Riverlink Shopping development, Raceview Shopping Centre, Booval Shopping Centre, Raceview Tavern and Brothers Leagues Club plus the Raceview State School, Bremer State High School, Bethany Lutheran private School and Ipswich Girls and Boys Grammar Schools. There is bus transport to all of Ipswich's other private primary and secondary schools as well as to the CBD and electric train to Brisbane. Ipswich City Council Rates: \$570 per quarter (subject to change) Queensland Urban Utilities: \$232 per quarter plus consumption (subject to change) Listing Agents: Charles Kimmorley & Brady Chant Don't be disappointed, call me now - I'm waiting for your call. NGU Real Estate Ripley - The Kimmorley Group Results Speak Louder Than Words Disclaimer: NGU Real Estate Ipswich has taken all reasonable steps to ensure that the information in this advertisement is true and correct but accept no responsibility and disclaim all liability in respect to any errors, omissions, inaccuracies or misstatements contained. Prospective purchasers should make their own inquiries to verify the information contained in this advertisement.