

# 1 Beltana Court, Vermont, Vic 3133



## House For Sale

Thursday, 14 March 2024

1 Beltana Court, Vermont, Vic 3133

Bedrooms: 4

Bathrooms: 2

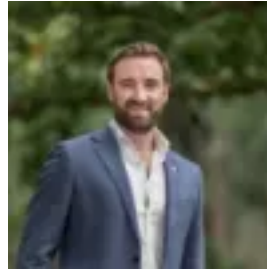
Parkings: 2

Area: 536 m2

Type: House



Adrian Nyariri  
0455089610



Daniel Broadbent  
0398706211

**\$1,050,000 - \$1,150,000**

Tranquilly placed in a highly desirable court location perfect for a family, this extensively modernised home promotes a natural warmth throughout the free flowing layout. Two generously proportioned living domains offer exceptional entertaining options, connecting with a private alfresco area. This leafy highly sought after location is merely minutes stroll to Brentford Square shops, public transport and the idyllic trails and parkland at Bellbird Dell. Featuring excellent natural light and space, Tasmanian Oak polished floorboards add sophistication to the immaculate interiors. Comprising a large lounge and dining zone with street outlook. The family/meals area interacts superbly with a chef-worthy, stone topped kitchen. Designed for those who love to cook with 700mm Smeg oven, gas cooktop and rangehood plus a Miele dishwasher. Home parties and gatherings will be seamless with the family area directly adjoining a paved alfresco zone and deck, designed for the ultimate outdoor entertainment. Additionally a grassed fenced space is ideal for young children and pets. The home welcomes a zoned master on entry with walk through, double built-in robes and an ensuite. Enhanced by three extra bedrooms with BIRs and a spotless family bathroom. Convenience is further elevated by a double carport, oversized storage shed, gas ducted heating, evaporative cooling, ceiling fans x 2, pendant lighting, good sized laundry, excellent internal storage cupboards throughout, 10 x solar roof panels, and dual side gate access. Minutes to golf courses, Aqualink, several local reserves and pocket parks, Vermont Shops and Forest Hill Chase. Well placed for zoned Vermont Secondary College and Vermont Primary, St Timothy's Catholic Primary and Emmaus College. Close proximity to buses and trains, Deakin University and seamless Freeway/Eastlink connections.