

1 Blackburn Street, St Ives, NSW 2075



Sold House

Friday, 5 April 2024

1 Blackburn Street, St Ives, NSW 2075

Bedrooms: 4

Bathrooms: 2

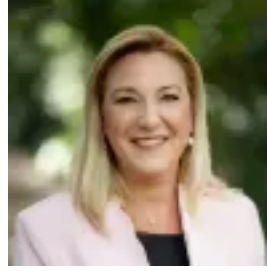
Parkings: 2

Area: 935 m2

Type: House



David Beveridge
0296462075



Felicity Gooley
0294499066

\$2,961,000

A compelling prospect positioned north facing in a quiet street, this well presented home is desirable to those seeking a quality start to move into, renovators looking for a new project or an exceptional block on which to build a new home. The single level residence is bright and engaging with solid timber floorboards and a substantial floorplan, Families will appreciate the separate lounge room, the generous living and dining and the large bedrooms. The design provides the option of a private and large master with adjoining home office and a two way ensuite or a separate wing for the in-laws. The backyard is another highlight featuring a generous terrace and fenced and delightful lawn for the kids. The 935.8sqm block is near level and sits within walking distance of bus services, local shops, Brigidine College, Sydney Grammar and St Ives Park Primary School. Accommodation Features: * Bright interiors with timber floors, reverse cycle a/c * Large lounge room, spacious living room, dining room * Central gas kitchen, Miele appliances, ample storage * Flexible separate master wing with external access, an adjoining office and a two-way ensuite - the wing could be used as an in-law suite * Large bedrooms, built-in robes, neat and tidy bathrooms * Powder room, large internal laundry and utility room External Features: * Peaceful setting in a quiet street * Generous and near level 935.8sqm block * Front courtyard, easily accessible double carport * Established gardens, paved rear alfresco terrace * Superb private back lawns and garden Location Benefits: * 190m to the 582 bus services to St Ives Shopping Village and Gordon Station * 650m to the 195/6, 196, 197 and 582 bus services to Gordon Station, Macquarie, Belrose and Mona Vale * 600m to Sydney Grammar School * 800m to St Ives Park Primary School * 800m to Hassall Park * 850m to the local shops, cafes and IGA * 850m to Brigidine College * 2.1km to Masada College * Close to St Ives High School * Moments to St Ives Shopping Village Contact ☎ David Beveridge ☎ 0411 225 167 Disclaimer: All information contained here is gathered from sources we believe reliable. We have no reason to doubt its accuracy, however we cannot guarantee it.