

1 Broken Court, Werribee, Vic 3030



House For Sale

Wednesday, 22 November 2023

1 Broken Court, Werribee, Vic 3030

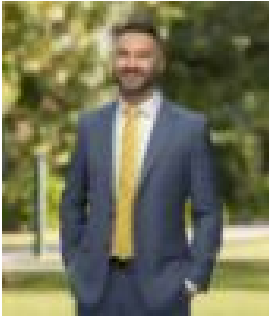
Bedrooms: 3

Bathrooms: 1

Parkings: 2

Area: 536 m2

Type: House



Dean Caramia
0431601399



Michelle Chick
0416007949

\$490,000 - \$530,000

Welcome to 1 Broken Court, Werribee! This fully renovated home presents a fantastic opportunity for families seeking a spacious and modern living experience in a highly desirable location. With its three bedrooms, two living areas, a studio at the rear, and its close proximity to schools, recreational facilities, and transportation options, this property offers a versatile and convenient lifestyle. Step inside this inviting home and discover a well-designed floor plan that caters to both comfort and functionality. The three bedrooms provide ample space for family members or guests, ensuring everyone has their own private sanctuary. The stylishly renovated bathroom features modern fixtures and finishes, adding a touch of luxury to your daily routine. The property boasts not one, but two separate living areas, offering flexibility and space for various activities. Whether you desire a formal lounge, a casual family room, or a dedicated play area for children, these living spaces can be tailored to suit your family's needs and preferences. Additionally, the studio at the rear provides a versatile space that can serve as a home office, art studio, or even a guest retreat. The interior of the home has undergone a comprehensive renovation, delivering a contemporary and fresh aesthetic throughout. The fully equipped kitchen is a standout feature, complete with high-quality appliances, ample storage space, and sleek countertops. It forms the heart of the home, making meal preparation a pleasure and providing a central gathering point for family and friends. Convenience is key with this property's prime location. Situated near Westgrove Primary School and Bethany Primary School, families can enjoy easy access to quality education options for their children. The nearby Paul Sadler Swim Land is perfect for those seeking aquatic fun and fitness activities. For commuters, the property's proximity to Werribee Train Station offers a quick and easy commute to Melbourne's CBD and surrounding areas. Nature enthusiasts will appreciate the nearby Werribee River walking trails, providing an idyllic setting for leisurely strolls or outdoor adventures. Don't miss out on the opportunity to make 1 Broken Court your new home. With its attractive features, fully renovated interior, versatile living spaces, and convenient location, this property offers a comfortable and vibrant lifestyle in the heart of Werribee. Contact us today to arrange a viewing and secure this exceptional opportunity.