

1 Clyde Street, Guildford, NSW 2161



Duplex/Semi-detached For Sale

Tuesday, 23 April 2024

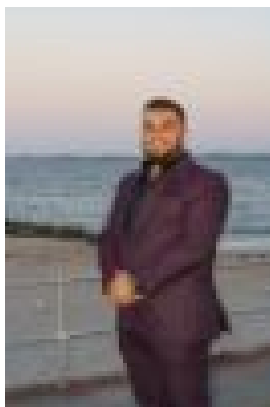
1 Clyde Street, Guildford, NSW 2161

Bedrooms: 5

Bathrooms: 3

Parkings: 2

Type: Duplex/Semi-detached



Peter Gribilas Gribilas
0295334757

Contact Agent

Experience the epitome of modern family living with this stunning duplex, meticulously designed to offer effortless indoor and outdoor enjoyment, this designer duplex blends with quality modern style and comfort over two immaculate stories! The home features spacious interiors and high-end inclusions boasting five spacious bedrooms, multiple living areas with an outdoor undercover alfresco and yard for families to enjoy all year round! This impressive home is ready to move straight into with nothing further to spend, and it's positioned within juts a short stroll of Guildford train station and local shops. Features include: - Five spacious bedrooms with built-in wardrobes, providing ample accommodation for the entire family.- Master bedroom features an en-suite bathroom, walk-in wardrobe & a private balcony for relaxation.- Multiple living areas, creating a welcoming ambiance for family gatherings & entertaining guests.- Luxury kitchen adorned with sleek stainless-steel appliances, gas cooking, exquisite stone benchtops & custom cabinetry featuring gold gilded accents.- Two sleek modern bathrooms tiled from floor to ceiling + contemporary internal laundry, offering convenience. - Ducted air conditioning, high ceilings, security alarm & video intercom included in the residence. - Single lock-up garage with storage space + additional driveway parking - Under cover outdoor alfresco BBQ area with yard for families to enjoy all year round! - Minutes to all of local Guildford amenities, schools, shops & Guildford Train Station For private inspections, please contact Peter Gribilas on 0434 016 127.