

1 Colonial Drive, Gulmarrad, NSW 2463



Sold House

Tuesday, 26 March 2024

1 Colonial Drive, Gulmarrad, NSW 2463

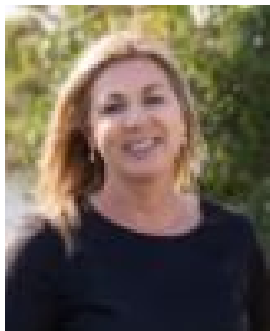
Bedrooms: 4

Bathrooms: 2

Parkings: 4

Area: 4100 m2

Type: House



Toni Skinner

0429453333

\$905,000

1 Colonial Drive in Gulmarrad stands out as a highly anticipated property, drawing potential buyers with its undeniable charm and promise. Featuring four bedrooms, picturesque established gardens, it caters perfectly to families and retirees alike, all at an appealing price point. Recently refreshed with fresh paint and sleek bamboo flooring, it emanates a sense of modernity and freshness. Its layout is designed for effortless living, with the master bedroom tucked away at one end and the remaining three bedrooms and bathroom at the other. The newly renovated kitchen, now bright and spacious, overlooks the enchanting rear gardens, further enhancing the property's allure. The interconnected air-conditioned living, dining, and kitchen areas create a seamless flow, ideal for both daily living and entertaining guests. Stepping outside, you will find a delightful outdoor entertaining space with a sought-after north-east aspect, promising enjoyment throughout the year. Adding to its appeal is the substantial 7m x 6m shed, complete with power and water connections, offering ample storage or the potential for a coveted workshop. The meticulously manicured yard and gardens inspire envy, beckoning you to immerse yourself in this idyllic setting. Positioned in Gulmarrad, the property enjoys convenient access to Brooms Head for its National Park and beaches, as well as to Maclean with its array of town amenities plus the Clarence River. Providing an enticing alternative to nearby coastal towns, now is the perfect time to secure your family's future or retire confidently in this flourishing region. With a positive market outlook, this attractive and well-priced home is unlikely to remain available for long. Don't hesitate to take swift action and seize this exceptional opportunity.