

1 Dawber Drive, Plympton Park, SA 5038

NOAKES
NICKOLAS

House For Sale

Wednesday, 12 June 2024

1 Dawber Drive, Plympton Park, SA 5038

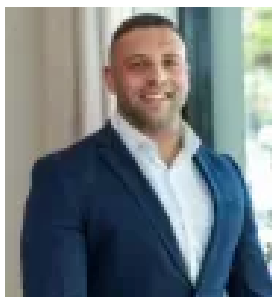
Bedrooms: 3

Bathrooms: 2

Parkings: 1

Area: 252 m2

Type: House



Jordan Tresidder
0881663989



Casey Grigg
0422592852

Best Offers By 24/06 (USP).

Best Offers By Monday 24th June at 1pm (Unless Sold Prior). Constructed in 2017 by Hickinbotham Homes, this contemporary Torrens titled three-bedder offers a stylish home base on an easy-care 252m² within easy reach of all the practicality of the city and the charm of the coast. Enjoy the peace and quiet of one way Dawber Drive, bringing only local traffic into the midst of this friendly suburban streetscape. Behind secure fencing and a sleek minimalist facade, enter the home onto the premium tiles of the hallway. Set on the front of the home, the main bedroom suite includes generous windows, a walk-in robe and a stylish private ensuite. Two more bedrooms include mirrored built-in robes and share use of the main bathroom, complete with a large bath and convenient separate toilet. Open plan living is your place to connect, with a chic Caesarstone-topped island bar at its centre ready for meal prep and catch-up drinks alike. Enjoy a walk-in pantry, modern stainless steel appliances, feature pendant lighting and an abundance of natural light too, with lots of room to accommodate your existing dining and lounge settings - or perhaps something new to match your new home. Outdoors, the low maintenance courtyard is wrapped in good neighbour fencing, with a new backyard setting ready for entertaining and outdoor dining, rain or shine. There's so much to love about life in Plympton Park, less than ten minutes to the beautiful suburban coastline, coffee at Bray Street Coffee Roasters and Front Page Cafe, boutique shopping at Westfield Marion - all while just twelve minutes to the CBD. Close to Drakes Ascot Park, Foodland Plympton, Kurralta Central, Coles Castle Plaza and Jetty Road shopping, everyday shopping convenience is everywhere, with plenty of public transport and great local schools nearby too. Settle in for a fabulous lifestyle in Plympton Park. More features to love:- Reverse cycle ducted A/C throughout plus ceiling fans- Secure garage and further off-street parking- Premium tiling to floors and bathrooms- Fuss-free landscaping with newly built pergola ideal for Alfresco dining- Secure electric gates- 6.5kW solar system- Zoned to Plympton International College, close to Forbes Primary and Emmaus - Christian College and within the catchment area for Forbes Children's Centre- Close to newly renovated local park with BBQ setting- Moments to bus stops along Ferry Avenue and Marion Road plus trams to the CBD and Glenelg- 3km to Glenelg's Jetty Road, under 4km to Westfield Marion and 5.8km to the Adelaide CBD. Land Size: 252sqm Frontage: 11.02m (approx.) Year Built: 2017 Title: Torrens Title Council: City of Marion Council Rates: \$1693.81 PASA Water: \$172.44 PQES Levy: \$146.75 PA Disclaimer: all information provided has been obtained from sources we believe to be accurate, however, we cannot guarantee the information is accurate and we accept no liability for any errors or omissions. If this property is to be sold via auction the Vendors Statement may be inspected at Level 1, 67 Anzac Highway, Ashford for 3 consecutive business days and at the property for 30 minutes prior to the auction commencing. RLA 315571.