

1 Denahy Court, Aspendale Gardens, Vic 3195

buxton

Sold House

Sunday, 20 August 2023

1 Denahy Court, Aspendale Gardens, Vic 3195

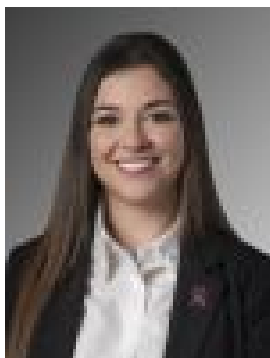
Bedrooms: 4

Bathrooms: 2

Parkings: 1

Area: 538 m2

Type: House



Amelia Con
0434643002



Steve Turner
0395583337

\$1,100,000

Corner welcoming family living with a hard-working bonus! Corner-sited beyond a wide-spreading palm-tree, this four bedroom, 2.5 bathroom, dual zone home comes with a hard-working extra - a separate entry, fully-self-contained workspace with its own climate-control and powder-room. Currently styled and plumbed as a salon, this adaptable space is equally appealing as a professional consulting-suite, a tradies' home-office, or overflow accommodation for adult kids, in-laws or guests! Ready to welcome a big busy family with a warmly timber-floored sitting-room, and an expansive family zone beyond a timeless Tasmanian Oak kitchen, this spacious home has even more living outdoors in an entertaining al fresco pavilion in high-hedged gardens! Styled with a fitted walk-in robe and an elegant ensuite for the quiet master-suite, this centrally heated home is appointed with reverse-cycle air-conditioning, an alarm, and a 12-panel solar-energy system with a high-capacity inverter. Set in groomed gardens with palm-shaded lawns out front, even the outdoors work hard with vegie gardens ready to plant at the rear, two sheds and an auto-gated car carport from Sutherland Ave. A minute to Aspendale Gardens Shopping Centre and a few minutes more to the new beachside stations and shopping strips, this is family living that works for you - close to St Louis de Montfort's Primary School and accessible to Parkdale Secondary College.