

1 Ellis St, Condell Park, NSW, 2200

Sold House

Tuesday, 25 April 2023



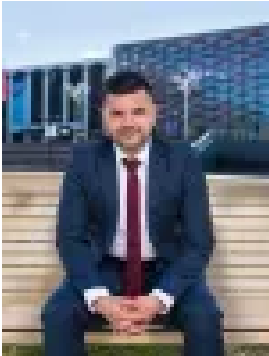
1 Ellis St, Condell Park, NSW, 2200

Bedrooms: 3

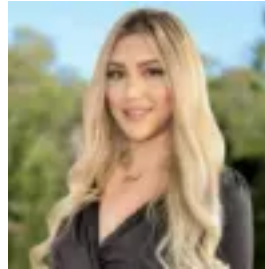
Bathrooms: 1

Parkings: 1

Type: House



Gerice Gittany
1300884337



Maral Atai

1328SQM in the heart of Condell Park

Set on over 1,328SQM in clear land and ideally located in a suburban street in Condell Park, this recently renovated masterpiece family home presents spectacular future potential and promise. On Offer:

- Three generous sized bedrooms
- Multiple living and dining areas
- Modern contemporary designed main bathroom
- Updated and immaculate grand kitchen
- Driveway access to mammoth backyard with multiple car accommodation

Boasting substantial equestrian facilities with seven stables, horse float garage and storage, discover its development potential (STCA) whilst enjoying the spacious and refreshed main home. Its well located walking distance to Bankstown Paceway and bus and with easy access to Bankstown central and its wide array of amenities.

Designed with easy care comfort in mind, beautiful timber floors adorn the interiors whilst wide picture windows provide an abundance of natural light and offer leafy street scape vistas. Extremely family friendly there is a level grassed yard for the children to play plus a covered terrace area. Additional features include a gas bayonet in the living room for heating, reverse cycle air conditioning in one bedroom and ample storage areas.

To organise an inspection call Gerice on 0415 380 433

DISCLAIMER: While GM Estates have taken all care in preparing this information and used their best endeavours to ensure that the information contained therein is true and accurate, but accept no responsibility and disclaim all liability in respect of any errors, inaccuracies or misstatements contained herein. GM Estates urges prospective purchasers to make their own inquiries to verify the information contained herein.