

1 Gerard Court, Croydon North, Vic 3136



Sold House

Tuesday, 11 June 2024

1 Gerard Court, Croydon North, Vic 3136

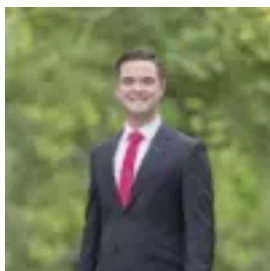
Bedrooms: 3

Bathrooms: 1

Parkings: 3

Area: 998 m2

Type: House



Cory Phillips
0398706211



Jen Harlow
0398706211

\$950,000

An exciting find, this fantastic private home fulfills all the needs of a couple or family with a generous 998m² block and ample entertaining space to enjoy all year long. Tightly held for its quiet leafy cul de sac position, the wide front hedge creates a perfect partition and a useable garden enhanced by a cubby house for children to enjoy, plus timber decked entrance. Polished hardwood floors add a distinct sense of quality to the home, displaying a large light filled living room and adjoining dining area. A well equipped kitchen includes gas cooktop, dishwasher and electric oven matched to timber cabinetry. Creating a second versatile living and entertaining area is a huge, paved outdoor pavilion with central pot belly stove for the ultimate winter warmth. Enjoy the company of friends and family, with children spilling out onto a second large grassed area, with optional work space/utility shed ideal for working at home. Three bedrooms with built-in robes are smartly arranged with access to a brightly lit central bathroom with separate WC plus a contemporary renovated laundry with ample drawers and cupboards. There is plenty of land to extend the home in future years if desired, with the possibility of adding a whole new master retreat level (STCA). Welcoming ample double garage parking incl overhead storage plus off-street parking for extra vehicles and a carport with oversized roof height for caravan/boat or tradie's van. The home is additionally fitted with gas ducted heating, evaporative cooling, split system and 4 external window blinds (2 electric), 2 garden/storage sheds and low-rise under-home storage, plus a water tank. The parkland pocket is amazing, within minutes of Hochkins Flora, Griff Hunt and Warriem Reserves, and a short drive to Hughes Park and Barngoon Reserve with a great offering of picnic, BBQ and play amenities. Close to Exeter Road shops, Chirnside Park Shopping Centre and several popular restaurants. Minutes to Yarra Valley Grammar, Luther and Oxley Colleges, Croydon Hills, Good Shepherd and Village Primary Schools. Walk to the bus stop and easy connections to train station and freeway/Eastlink. Healesville distilleries, restaurants and Yarra Valley wineries are all in close reach. Start planning your house warming in this abundantly spacious and superbly private home. Disclaimer: The information contained herein has been supplied to us and is to be used as a guide only. No information in this report is to be relied on for financial or legal purposes. Although every care has been taken in the preparation of the above information, we stress that particulars herein are for information only and do not constitute representation by the Owners or Agent.