

1 Harlington Avenue, Farley, NSW 2320



House For Sale

Sunday, 26 May 2024

1 Harlington Avenue, Farley, NSW 2320

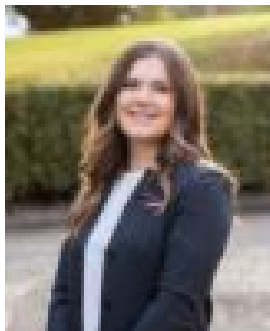
Bedrooms: 4

Bathrooms: 2

Parkings: 2

Area: 640 m2

Type: House



Jaide Van Wyck

0429857622

\$850,000 - \$870,000

Showcasing grand proportions and an easy living/entertaining layout; this breathtaking 2022 McDonald Jones home sits on a large block within a sought-after enclave boasting an enviable lifestyle with luxurious finishes. Alive with natural light, the open plan living, dining and kitchen enables you to enjoy direct access to the outdoor entertaining area being both family friendly and forever stylish. Designed to entertain with ease, the kitchen features luxury stone benchtops, a 5 burner gas stove, tiled splash back, walk-in pantry and upgraded appliances. Flowing through the glass sliding doors, a brilliant design providing the utmost in luxury and convenience offers a large alfresco with spa, creating the perfect place to relax and unwind. Expertly resolved in its aesthetic and layout, the floorplan offers a home theatre room to the front of the home for cosy nights in. Rich in 'wow' factor, the master suite is complete with a sumptuous ensuite and built-in robe with glass sliding doors offering private access to outdoor entertaining area, complemented by an additional three bedrooms with built-in robes throughout this house of spacious proportions. Situated amongst pleasant, peaceful bushland surrounds the estate is within short proximity to the town centres of Rutherford and Maitland, home to shopping centres, retailers, specialty stores, public and private schools plus within close proximity to the New Hunter Expressway and Hunter Valley Vineyards. This lovely estate is the perfect location for families with a large children's playground set to be built at the bottom of the street! Offering an exterior of luscious landscapes, you are spoilt with the additional convenience of space within a fully fenced yard and an abundance of additional features on offer within this 640sqm block:- Internal access to a double garage- Ducted air conditioning- High ceilings throughout- Firepit area for perfect for cooler months- Outdoor patio blinds, allowing you to entertain year round with built-in UV protection- Generously sized garden shed perfect for storage- Low maintenance gardens, all that's left to do is move in! Disclaimer: The information herein is collected from sources we trust to be dependable. However, we cannot guarantee its accuracy, so it is advisable for interested persons to rely on their own enquiries.