

1 Kanbi Place, Ngunnawal, ACT 2913

ARCHER

Sold House

Monday, 14 August 2023

1 Kanbi Place, Ngunnawal, ACT 2913

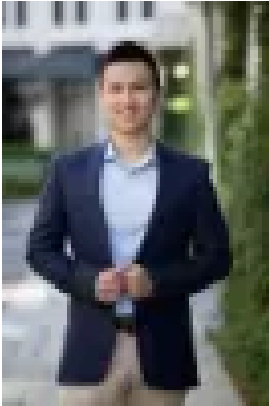
Bedrooms: 3

Bathrooms: 2

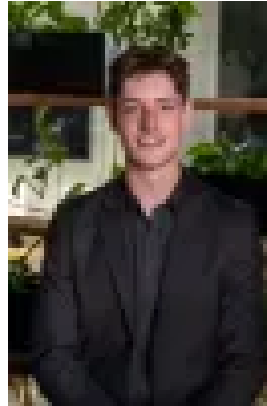
Parkings: 2

Area: 366 m2

Type: House



Alex Wang
0262625232



Benjamin Bailey
0262625232

Contact agent

Truly a cut above in the style stakes, this sunshine-swathed home on a quiet corner block seconds from Ngunnawal Primary School and the Bicentennial Trail combines the ideal mix of urban amenity, parkland access and renovated interiors. Sightlines from the front entry and lounge right through to the curved sitting nook with its triple bank of floor-to-ceiling windows overlooking the back yard and adjacent to the covered alfresco space give the main living spaces a joyously airy feel. The sparkling centrepiece is the sleek kitchen, where a custom water-fall-edged island doubles the already impressive preparation areas. Its marble-look countertop is a sophisticated counterpart to the pale grey subway tile splashback that runs to the ceiling while bespoke timber shelving provides a punch of warmth that's echoed in the flooring. The marble theme is carried into the main and ensuite bathrooms where the high-end feel continues with rainfall showers and other premium fixtures. With three sizeable bedrooms, including a tranquil master suite, and a private back yard that takes advantage of its quiet cul-de-sac location this is a family sanctuary of rare quality.

FEATURES

- Thoroughly renovated single-level home on a corner block
- Great natural light
- New timber floors throughout
- Open-living and dining
- Sunny lounge space
- New designer kitchen with quality appliances, excellent bench space and storage, coffee station and plumbing for refrigerator
- New bathrooms including master ensuite with frameless rainfall shower
- Reverse-cycle air conditioning
- Automatic roller shutter to windows
- 6kW solar panels
- Security cameras
- New head pump hot water system
- Low-maintenance gardens with artificial grass
- Colorbond fencing
- Automatic garage with internal access

Particulars (all approx.) Year Built: 1997 Block Size: 366 m² Rates: \$578/quarter EER: 5.0

DISCLAIMER We have obtained all information provided here from sources we believe to be reliable; however, we cannot guarantee its accuracy. Prospective purchasers are advised to carry out their own investigations and satisfy themselves of all aspects of such information including without limitation, any income, rentals, dimensions, areas, zoning and permits. Any figures and information contained in this advertisement are approximate and a guide only and should not be relied upon for financial purposes or taken as advice of any nature. Individuals, Self-Managed Super Funds, companies, anyone or entity, should make their own inquiries and seek their own advice and rely only upon those inquiries and advice. Archer does not guarantee the accuracy of the information above and are not financial advisers or accountants and do not provide any of the above information as advice of any nature.