

1 Koel Place, Boambee East, NSW 2452

House For Sale

Wednesday, 25 October 2023

1 Koel Place, Boambee East, NSW 2452

Bedrooms: 4

Bathrooms: 2

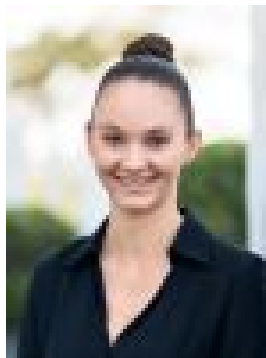
Parkings: 3

Area: 1466 m2

Type: House



Kendall Devine
0437775485



Nikkia Humphries
0408333883

\$879,000

Discover the perfect blend of space, comfort and convenience in this 4 bedroom, 2 bathroom home situated on a sprawling 1466 sqm block. Boasting a double garage and additional car space, this property offers the ideal setting for your family's aspirations. Upon entering, you'll immediately sense the generous living areas designed to accommodate the entire family. The spacious kitchen provides good cupboard storage and plenty of bench space. Adjacent to the kitchen, is a large dining area or an optional second living space, bathed in natural light from the expansive windows, offering views of the substantial backyard. Stepping out from this area through glass sliding doors, you'll find yourself on a large undercover deck and entertaining space. This is where cherished family memories will be created, and friends will gather for unforgettable moments. Stepping down off the deck, you will discover ample space for a pool, additional storage sheds and all the space needed for toys, activities and the children and pets to run free. All bedrooms are thoughtfully proportioned and include built in wardrobes, with the main bedroom featuring a recently renovated ensuite and air conditioning. Ceiling fans are positioned throughout the home and it is also equipped with solar panels, a garden shed and additional off street parking ensuring all needs are met. Situated in a prime location within Boambee East, this home is conveniently close to schools, shops and a mere stone's throw away from the vibrant heart of Sawtell and its stunning beaches. This property promises an abundance of space and easy access to all life's essentials. This is your opportunity to secure your new family home that offers all you have been searching for. Council Rates: \$3,217 pa (approx.) Land Size: 1466 sqm (approx.) Building Size: 185 sqm (approx.) Age: 22 years (approx.)