

# 1 Leon Court, Ferntree Gully, Vic 3156



## Sold House

Monday, 18 March 2024

1 Leon Court, Ferntree Gully, Vic 3156

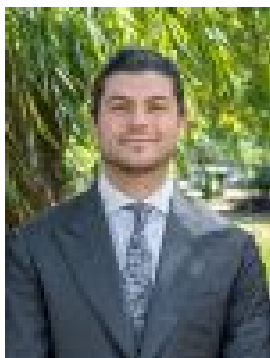
Bedrooms: 5

Bathrooms: 3

Parkings: 2

Area: 875 m2

Type: House



Rene Mawad  
0403141596



Cat Schwind  
0401011314

**\$1,138,000**

In a quiet, secluded court, 1 Leon Court is the perfect family home with its sweeping views, spacious living spaces, and entertainer's delight among the tropical gardens in the backyard. On the ground level, an expansive self-contained unit, with newly laid grey carpet, is the perfect space for a home office, parents-in-law or a teenage retreat downstairs, also containing its very own kitchenette fitted with a sink and space for a dishwasher or mini-fridge. In the hallway, a full bathroom services the unit, and a 2.5 car garage with rear roller door access, through to the back yard and adjacent a massive under-house storage perfect for that man-cave. Heading upstairs, the main level of the property features a cathedral timber ceiling with exposed beams that cast your eye up, creating the grandeur that the kitchen deserves. A beautiful new modern curved stone benchtop with wood paneling, compliments the stunning curved wall of the open-plan room. A gas cooktop, electric oven, double sink, and dishwasher complete the kitchen space. Off the open-plan kitchen and meals area, a sizable family room with access to the main balcony which is situated behind the kitchen, a spacious living and dining space create the perfect atmosphere for guest entertaining, boasting its hardwood floors, pendant lighting, and access to its private deck with views of Mount Waverley Cathedral. Adjacent to the living and dining space, separated by the staircase, the master suite overlooks the front waterfall and features a wide walk-in robe and ensuite. Down the main hallway, you will find an additional three bedrooms, all with built-in robes and serviced by the main bathroom with deluxe spa bath and separate WC. Outside, a beautiful gazebo surrounded by lush tropical gardens creates the perfect space for guest entertaining. The outdoor fireplace and BBQ area make gatherings easy, while the added playground & custom built cubby house keep young children entertained. Additional features of the property include gas hot water, laundry, black fixtures, ducted heating, ceiling fans, a water feature, new blinds, and an alarm system. FEATURES: • Self-contained unit/ 5th bedroom • Two car garage • Underhouse storage/man cave - full height with concrete floor • 3 bathrooms • 4 bedrooms • Master has ensuite bathroom and walk-in robe • Intercom system • New carpets • Hardwood flooring • Tall ceilings • Cathedral ceilings in the main open plan space. • Living and dining area • Two balconies • Pergola • Separate WC • Spa Bath • Laundry with pull down Attic Stairs • Tropical gardens • Open fire-pit and outdoor natural gas BBQ area • Playground • Black fixtures in bathrooms • New blinds • Freshly painted • 875 sqm block • Ducted heating with refrigerated cooling • Ceiling fans LOCATION: Discover the epitome of convenience with this property! Located near Lysterfield Primary School, Westfield Knox, Mountain Gate Primary School, St. Joseph's College, Upper Ferntree Gully, and Ferntree Gully train stations, education and commuting are a breeze. Enjoy leisurely moments at Waterford Valley Golf Course, Koolamara Waters, and Drake Street Playground. With Heritage College Knox, Wattle View Primary School, Fairhills College, Kent Park Primary School, and Ferntree Gully North Primary nearby, education excellence is within reach. Plus, indulge in shopping, dining, and entertainment at Westfield Knox. Embrace a lifestyle of luxury and convenience in this sought-after location! On Site Auction Saturday 6th of April at 4:30pm