

1 Peach Way, Templestowe, Vic 3106



Sold House

Monday, 11 September 2023

1 Peach Way, Templestowe, Vic 3106

Bedrooms: 4

Bathrooms: 2

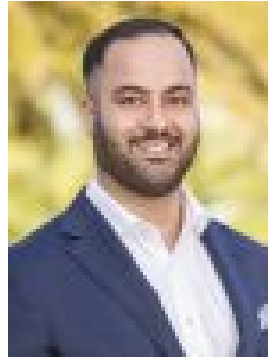
Parkings: 8

Area: 791 m2

Type: House



Scott George
0398428888



Ryan Faridi
0425440505

\$1,851,000

Sale by SET DATE® Closing October 10. Boasting prominent street exposure on an outstanding 791sqm (approx.) north-facing corner block, a five-star investment or development (STCA) opportunity awaits. Whilst preparing for a future development or purely investing you will benefit comfortably from the \$57,200 per year approx. rent plus tenant paid outgoings. Easily accessible via public transport and major arterials, the convenient location will be of great interest to medical professionals looking for a property boasting a generous collection of consulting rooms, operating theatre, multiple recovery rooms, reception area, toilet facilities and on-site car spaces. Located within the sought-after Serpell Primary School and East Doncaster Secondary College catchment areas and enjoying outstanding access to The Pines Shopping Centre, Westfield Doncaster, Ruffey Lake Park and the Eastern Freeway/EastLink, this potential-rich allotment also presents an inspired setting for a trendy residential development (STCA).*The property comes with 2 toilets & plumbing in most rooms to allow for easy full bathroom conversions. Actual bathrooms are not a part of the sale.