

1 Pleasant View Close, Albion Park, NSW 2527



House For Sale

Friday, 10 May 2024

1 Pleasant View Close, Albion Park, NSW 2527

Bedrooms: 5

Bathrooms: 3

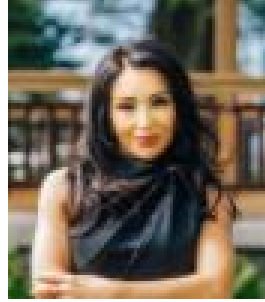
Parkings: 2

Area: 1129 m2

Type: House



Ben Linnehan



Francesca Di Fazio
0422621222

Auction

Designed to take the brisk pace and broader needs of modern family life in stride, this beautiful dual-level home offers classic living at its flexible best. Boasting a Southern Highlands feel, the residence soothes the soul with its elegant finish, tranquil surroundings and breathtaking views of Lake Illawarra. A collection of indoor and outdoor entertaining areas complement the spacious interiors, perfect for hosting gatherings or simply unwinding in style. Meticulously landscaped lush gardens envelop the property, creating a serene oasis with a stunning backdrop through every season. The true heart of the home, the open-plan kitchen and dining zone flaunts gas cooking, pendant feature lighting and a walk in pantry. Air conditioning throughout. You'll also enjoy luxurious master quarters showcasing an ensuite, air-conditioning and a walk-in robe, a main bathroom with spa and a large downstairs study or potential fifth bed, in addition to oversized double garaging. Positioned mere moments from central Albion Park, local shops and a range of schools, and an easy 20-minute commute from Wollongong, this exceptional offering provides total convenience without any compromise on peace or privacy. For more information or to arrange an inspection, contact Francesca Di Fazio on 0422 621 222.