

1 Quintal Avenue, Modbury, SA 5092



Sold House

Friday, 11 August 2023

1 Quintal Avenue, Modbury, SA 5092

Bedrooms: 4

Bathrooms: 2

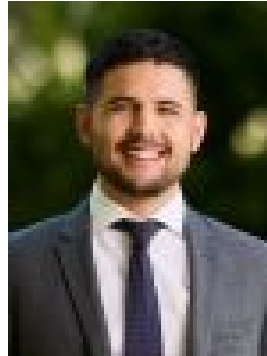
Parkings: 1

Area: 809 m2

Type: House



David Scalamera



Juan Gaviria
0424734897

\$857,000

Located in the very popular north-east suburb of Modbury, a convenient position, with a friendly community, which is known for its tree-lined streets, nice parks, and excellent shopping facilities such as Westfield Tea Tree Plaza. The area is full of well-known public and private schools, making it an ideal location for families. In addition to the great community feel, the suburb is conveniently located close to the O'bahn system, which provides a smooth commute to and from the Adelaide CBD. There is further public transport options located just a short walk away, along North East Road. This home is one of absolute convenience. The home itself is a circa 2010's built property that has lovely street appeal. With plenty of off street parking and gate access through to the rear of the property, there is an abundance of space here for the growing family. The outdoor entertaining area and low maintenance, yet spacious yard will really appeal to the busy family, who want space, yet don't have the time maintaining it. The interior of the home offers a nice neutral colour palette and is meticulously presented throughout. Just some of the features we love about this home:

- Torrens Title and significant sized allotment of approx. 809m²
- Well appointed kitchen with gas cooktop and stainless steel appliances
- Big walk in pantry with an abundance of storage space
- Formal lounge plus an open plan living and dining area
- Huge pitched roof pergola, with 2 x ceiling fans and point for the TV - an amazing outdoor entertaining space
- 3-way main bathroom with floor to roof tiling
- Timber look flooring through the main foot traffic areas of the home
- Carpet to the bedrooms for warmth and comfort
- Plenty of storage space throughout including built-in-robies in bedrooms 2 and 3
- Extensive security and alarm system
- Meticulously maintained home
- Nothing to do but move in and enjoy!

This property is zoned to the popular Modbury High School and there are a number of unzoned primary schools nearby including:

- Modbury West Primary School
- Para Vista Primary School
- Wandana Primary School
- Modbury P-6 School
- Ingle Farm East Primary School

With so many options for schooling and located in an area of absolute convenience, don't miss out on this fantastic opportunity to secure your home in the heart of the north-east. Contact us to discuss this outstanding property further.

Disclaimer: All information provided has been obtained from sources we believe to be accurate, however, we cannot guarantee the information is accurate and we accept no liability for any errors or omissions. Stpc stands for "subject to planning consent", and any reference to development opportunity is subject to planning consent.

*denotes approximates.