

# 1 Rothe Glade, Schofields, NSW 2762

## Sold Townhouse

Monday, 14 August 2023



1 Rothe Glade, Schofields, NSW 2762

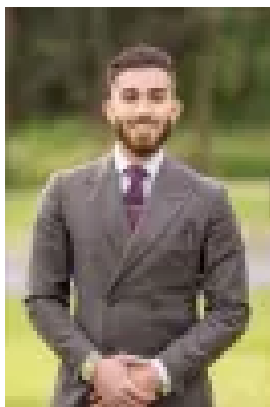
Bedrooms: 4

Bathrooms: 2

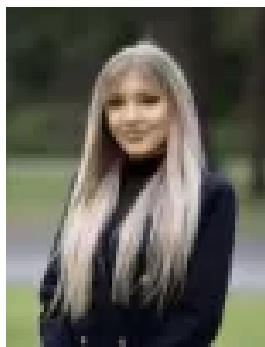
Parkings: 1

Area: 256 m2

Type: Townhouse



Hardii Admin  
0298381529



Alex Molodykh  
0298381529

**\$950,000**

North Facing ! Beautiful view from Balcony ! Oversized Free-Standing Townhouse with Top-of-the-Line Inclusions: A New Level of Luxury Awaits! Nirvana Estate Agents welcomes you to this luxurious, contemporary townhouse, a masterpiece of modern living. This impressive residence boasts high-end inclusions, seamlessly blending sophistication and comfort. Step into the expansive living space flooded with natural light, leading to a state-of-the-art kitchen, perfect for culinary enthusiasts. Outside, indulge in the serenity of a vast backyard, offering endless possibilities for relaxation and recreation. A harmonious fusion of style and functionality, this townhouse offers the epitome of modern living for those seeking the ultimate urban retreat. Features include:- 4 bedrooms with built-in robes- Master room with ensuite- 2 bathrooms, toilet downstairs- Kitchen with gas cooking and dishwasher- Internal laundry- Ducted reverse cycle air conditioning- Alarm system- Internal access to garage- Ample Storage space- Upgraded to Technika 900mm gas cooktop with 5 burner in lieu of Technika 600mm cooktop- Upgraded to Technika 900mm concealed undermount rangehood in lieu of the standard Technika 600mm rangehood- Hills Reliance 8 alarm system- Included (total of 5) additional double power points- Includes additional double weatherproof power point- Includes 1 external gas point to the external rear wall- New Fly Screens installed- New window Blinds installed Distance to local amenities:- 2 minute drive to Schofields Train Station (1.2km)- 4 minute drive to Tallawong Metro Station (4 minute drive)- 2 minute drive to Galungara Public School (1.1km)- 3 minute drive to Schofields Shopping Village (1.3km)- 5 minute walk to local Glory Park (750m)- 1 minute drive to Alex Avenue Medical Centre (350m)- Easy access to M7- 8 minute drive to Rouse Hill Town Centre (4.7km)- 10 minute drive to Marsden Park Business Park (6.2km) Contact Hardii on 0426 613 165 today to arrange a private inspection and experience the epitome of stylish living in Schofields Disclaimer: Nirvana Real Estates, its directors, employees and related entities believe that the information contained herein is gathered from sources we deem to be reliable. We have no reason to doubt its accuracy, however we cannot guarantee it. All interested parties should make and rely upon their own enquiries.