

# 1 Samuel Street, Wiley Park, NSW 2195



## Sold House

Friday, 22 September 2023

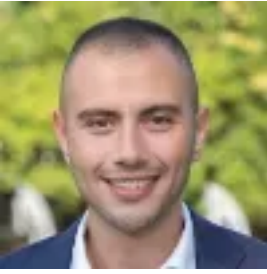
1 Samuel Street, Wiley Park, NSW 2195

**Bedrooms: 1**

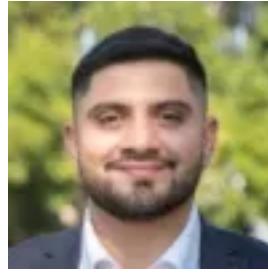
**Bathrooms: 1**

**Parkings: 1**

**Type: House**



Mark Saleh  
0286685754



Ahmad Elfata  
0286685754

**\$770,000**

Essentially a blank canvas awaiting new life, this fire-damaged home provides all the vital elements needed to recreate, develop and capitalise. Peacefully located directly adjacent to Lakemba Public School, this property enjoys a prized address in a family-oriented enclave. It is perfectly suited to a creative renovator or savvy investor seeking a lucrative opportunity in a high-growth neighbourhood.- Fantastic walk-to-everywhere location, just 450m from Wiley Park Station- Footsteps to Johnsen Square, local grocery stores and ice-cream shops- Bus transport, hairdressers and gymnasiums are also accessible on foot- Easy walk to both Wiley Park Public School and Lakemba Public School- Essentially a blank canvas in need of a sleek, contemporary renovation- Recreate and lease out, high-growth location rich with rental demand- Rare opportunity to create a landmark residence from the ground up- Spacious 322sqm (approx.) block with space for a home and backyard- Endless scope to enhance, add value and capitalise in a growing space- Fantastic location promotes a relaxed lifestyle of everyday convenienceDISCLAIMER: While PACE Property Agents have taken all care in preparing this information and used their best endeavours to ensure that the information contained therein is true and accurate, but accept no responsibility and disclaim all liability in respect of any errors, inaccuracies or misstatements contained herein. PACE Property Agents urges prospective purchasers to make their own inquiries to verify the information contained herein.