

1 Siena Ridge, Hidden Valley, Vic 3756



Sold House

Friday, 5 April 2024

1 Siena Ridge, Hidden Valley, Vic 3756

Bedrooms: 4

Bathrooms: 3

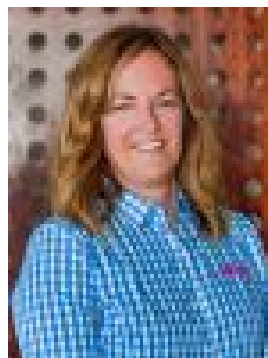
Parkings: 2

Area: 454 m2

Type: House



Peter Hess
0413003140



Vanessa Hess
0413003140

\$850,000

Positioned high in Hidden Valley, with uninterrupted views across Lake Grenfell and the golf course, this roomy and spacious home is ideal for a large family. Inside you have the feeling of privacy, with no neighbours visible nearby. There are four large bedrooms upstairs, plus a study downstairs, which could be used as a children's bedroom if need be. The master has a full ensuite bathroom with a freestanding tub, shower and double vanity. The walk-in robe is a his-and-hers with plenty of shelving, hanging space and drawers even for the most avid shopper. The private and sheltered balcony off the master is a beautiful feature, ideal for a morning coffee or a relaxing read in the evening. The other upstairs bedrooms are serviced by a full family bathroom plus a separate toilet and there is an adjoining living-TV room which is ideal for the kids to watch Netflix or be on Minecraft. On the ground floor, you are spoiled for living spaces, with a front formal living room, a casual family room and a private rumpus room plus a covered alfresco entertainment area as well. The main hub is the kitchen, which is spacious, has a large pantry, 900mm cooktop and range-hood, large electric oven, stone bench-tops, a huge fridge cavity, miles of bench space for preparation and serving of meals, and plenty of storage for all of your kitchen essentials. The dining area is also well proportioned and has plenty of room for a full sized dining table. There is also a very useful study, which as mentioned before, could be used as a bedroom with the third complete bathroom being only a few steps away. The house has excellent presentation and has had improvements done to the kitchen, ensuite bathroom, new carpets, recent painting and a very neat and well looked after low-maintenance garden. The house also features gas ducted heating, split-system air-conditioning, evaporative cooling, solar panels, roller shutters and pull-down blinds on the rear alfresco - this house has had plenty of care and attention over the years from the original owners, who currently live in the premises. For your vehicles, there is an oversized two car garage with internal access and plenty of off-street parking. Hidden Valley is one of the most popular lifestyle estates in the area and with the brand new multi-million dollar country club being open just down the road, it has added even more appeal. Also, you are just a few minutes drive from Wallan's shopping precinct and train station. You can commute into Melbourne in around an hour via the V/Line train or the Hume Freeway. Hidden Valley is also serviced by buses from many schools near and far.