

# 1 Stony Creek Court, Cedar Creek, Qld 4520

## Sold Residential Land

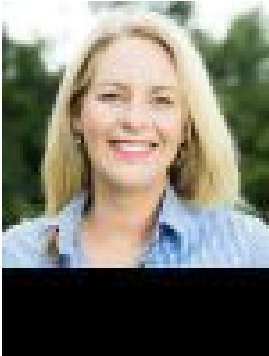
Thursday, 28 March 2024



1 Stony Creek Court, Cedar Creek, Qld 4520

Area: 33 m2

Type: Residential Land



Ronni Grevell

**\$1,675,000**

From the Mountains to the Creek – 84 Acres Breathtaking mountains and countryside border this magnificent parcel of land. Number 1 Stony Creek Court presents a rare lifestyle opportunity in a pristine rural setting, just 15 minutes from Samford Village and 45 minutes from Brisbane CBD. This unique property has over 600m of Cedar Creek frontage, a quality 3-bay shed with electric roller doors and 3-phase power, a bore, rich fertile soil suitable for growing a variety of produce, along with lush creek flats with crystal clear swimming holes and quality grazing pasture ideal for horses and livestock. Immerse yourself in this property's natural beauty; the perfect blend of a captivating natural landscape with a mix of native bushland with pristine koala habitat and cleared usable space. Revel in the exploration of the many trails that connect to the Flower Trail leading all the way up to Mt Glorious. Ready for you to create your country escape the north-east facing elevated house site is ideally located for privacy and views at the top of the block near the shed. Cedar Creek is a unique rural valley and creek side properties are highly desirable. Quietly nestled amidst prestige residences, this land offers complete privacy; country living with city convenience! The finer details: • Captivating natural landscape with lush rolling pastures • House pad with idyllic north easterly aspect • Shed 13m x 8m - 3-bay shed + annex | 3 phase power | 3 x extra height electric roller doors (2,750h) | gutter guard | 2 x whirlybirds • Direct access to pristine Cedar Creek with 600m (approx.) of creek frontage • Verdant grazing pasture ideal for horses/livestock or growing a variety of produce • Underground power to shed with 2 power boxes (1 at shed & 1 in paddock) • Bore with 4 tap sites (3 in paddock & 1 near shed) | Partially fenced • Pristine koala habitat • Bush trails connecting right through to Mt Glorious trail network • 15 mins from Samford Village shops, cafes & quality schools Disclaimer: Whilst every effort has been made to ensure the accuracy of these particulars, no warranty is given by the vendor or the agent as to their accuracy. Interested parties should not rely on these particulars as representations of fact but must instead satisfy themselves by inspection or otherwise.