

1 Wallis Place, St Ives, NSW 2075



House For Sale

Thursday, 2 November 2023

1 Wallis Place, St Ives, NSW 2075

Bedrooms: 4

Bathrooms: 2

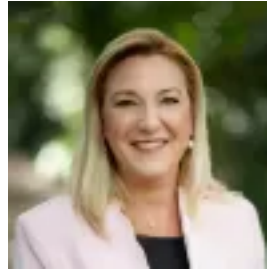
Parkings: 1

Area: 986 m2

Type: House



David Beveridge
0296462075



Felicity Gooley
0294499066

Auction Saturday 25 November, 4pm

Offering tranquil green views from every room and poised high-side from the street, it's easy to fall in love with this light filled home. Enjoyed by its family over the last two decades, it has become a wonderful entertainer with bi-fold doors retracting from the casual living spaces to the substantial alfresco deck that overlooks the pool. Four bedrooms are all bright and comfortable retreats with a stylish nearby contemporary bathroom. Downstairs is a second bathroom plus a wealth of flexible spaces including a large room with a polished concrete floor and generous storage. The over-sized garage has room for the boat or trailer or for a mancave for those who seek a workspace. Enjoy easy convenience to the bus, St Ives High School, St Ives Public School and the village. Accommodation Features: * Timber floors, high ceilings, excellent natural light * Full brick construction, open plan lounge and dining * Plantation shutters, ducted a/c and a gas bayonets * Generous family room, modern gas kitchen, dishwasher * European appliances, wall of bi-folds to the large deck * Four bedrooms, most with robes, chic family bathroom * Separate toilet and luxury freestanding bath, * Expansive versatile lower level spaces with a bathroom * Large room with polished concrete floors, cellar space * Ample storage throughout the home * Substantial lock up garage, room for two small cars plus room for a workshop or a trailer External Features: * High-side with a north aspect, 986sqm block * Dual street frontages, established gardens * Substantial covered alfresco deck, gas point for the barbeque * Level lawn areas for the kids, pool, front porch, green outlook Location Benefits: * 400m to the 194, 194x, 582 and 594 bus services Gordon station, North Turramurra, Castlecrag, Northbridge, Cammeray and the QVB the City * 400m to St Ives Public School * 750m to St Ives High School * 1km to Masada * 1.5km to St Ives Shopping Village * Close to Brigidine College and Sydney Grammar * 2.6km to Gordon Station * Easy drive to Chatswood N.B. Lower level areas not approved due to limited ceiling height. Contact David Beveridge ☎0411 225 167 Disclaimer: All information contained here is gathered from sources we believe reliable. We have no reason to doubt its accuracy, however we cannot guarantee it.