

# 10 - 12 Nisbett Street, Reservoir, Vic 3073

## House For Sale

Thursday, 13 June 2024

10 - 12 Nisbett Street, Reservoir, Vic 3073

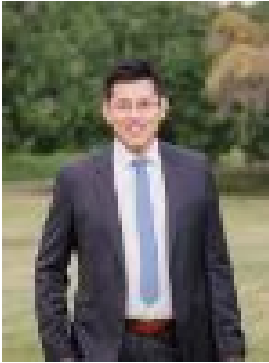
Bedrooms: 1

Bathrooms: 1

Parkings: 40

Area: 1182 m2

Type: House



Kevin Fan  
1300568347



Kelly Yang  
1300568347

## Snatch up before the Completion of North East Link

Snatch up your real estate endeavours before the Completion of North East Link: Prime Residential Growth Zone Blocks This dual frontage of 30+ Meters blocks, situated merely 11 kilometres from the CBD, this dynamic enclave in Reservoir offers convenient access to trams, buses, and major train lines. The neighbourhood is undergoing a rapid transformation, with new homes and developments emerging, contributing to its evolving character. With its established reputation, Reservoir boasts promising prospects for sustained growth, ongoing gentrification efforts, significant infrastructure investments, and seamless connectivity. Nestled in a prime locale, the area features local bus services, easy proximity to tram stops and the train station, and a short stroll to nearby schools, Northland Shopping Centre, and Summerhill Village. Moreover, it provides effortless access to Latrobe University, and the CBD, and is surrounded by an array of picturesque parklands and reserves. The amenities:-

- Location enables Walking or Cycling to Latrobe University.
- Merri Creek Parks.
- Summerhill shopping centre.
- Northland Shopping centre.
- RMIT University.
- Access tram 86 direct to the CBD or take a bus to Preston + reservoir station.
- Only 11kms from CBD.
- Preston Market.
- High street shopping areas of Northcote, Thornbury and Preston.
- Preston North East Primary School.
- Reservoir Leisure Centre.
- Austin Hospital.
- NorthPark Private Hospital.

Land size: 1182sqm approx  
Deposit: 10% of the purchase price  
Settlement: 60/90/120/150 days  
This presents an unparalleled opportunity, so don't hesitate to make inquiries!