

# 10/1a Westmoreland Road, Leumeah, NSW 2560

## Townhouse For Rent

Tuesday, 7 May 2024

10/1a Westmoreland Road, Leumeah, NSW 2560

**Bedrooms: 2**

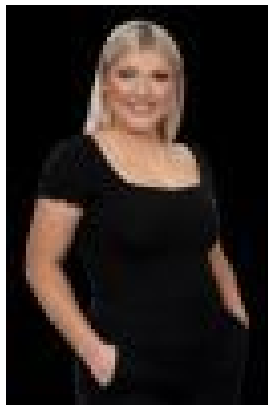
**Bathrooms: 1**

**Parkings: 1**

**Type: Townhouse**



Miranda Papallo  
0246050600



Tiffany Bailey  
0246050600

## **\$480 Per Week**

Double Storey Townhouse Featuring:- Two spacious rooms, walk in to main - Second bedroom with built in robe - Main bathroom with tub - Separate toilet - Combined living & Dining - Neat kitchen with ample cupboard space - Internal laundry with external access- Second toilet downstairs- Lockup garage with internal access- Rear yard enclosed

\*\*\*DISCLAIMER – To be able to view the property we require you to register your details. Please also complete a T-app application prior to viewing the property, if you do not complete an application, you will minimize your chance of approval. We DO NOT accept 1Form applications, please see attached link (please copy and paste link)

<https://t-app.com.au/mpcc> Once your application has been reviewed one of our team members will contact you \*\*\*\*\* We have, in preparing this document, used our best endeavours to ensure that the information contained herein is true and accurate to the best of our knowledge. Prospective applicants should make their own inquiries to verify the above information\*\*