

10/211 Wellington Parade South, East Melbourne, Vic 3002



Sold Apartment

Friday, 11 August 2023

10/211 Wellington Parade South, East Melbourne, Vic 3002

Bedrooms: 2

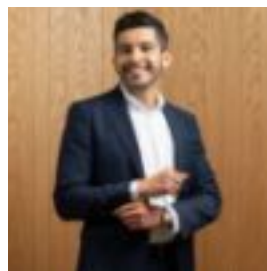
Bathrooms: 2

Parkings: 2

Type: Apartment



TOBY CAMPBELL
0384138000



ELLI BLANCO
0407393007

\$1,740,000

Discover the epitome of elegance at 10/211 Wellington Parade South in East Melbourne. This beautifully renovated ground-floor residence offers a luxurious living experience with impeccable attention to detail and high-quality finishes. Featuring a remote gas fireplace, timber floors, and high-end fixtures and fittings throughout, this residence exudes sophistication and charm from top to bottom. Every aspect of this home's 108 sqm of internal and 90 sqm of external living spaces have been thoughtfully re-designed to provide both comfort and style to the occupants. The kitchen boasts high-end appliances, an open-plan design and a walk-in pantry, making it a gourmet haven for culinary enthusiasts. The spacious layout includes two bedrooms on opposite sides, offering privacy for all and ample living space to spread out. Other highlights include;- Ducted reverse cycle air-conditioning- Heated Towelrails in bathrooms- Remote gas fireplace- Access to two pools and a full-sized gym- Timeless modern design- On-street parking permit (STCA)- Large storage cage. The location of this apartment is simply unbeatable. Nestled in the heart of East Melbourne, you'll find yourself surrounded by a vibrant community and an array of amenities. From the charming cafes to the lush green parks and gardens just moments away, and only a stone's throw from the Paris end CBD, Rod Laver arena and of course the mighty MCG.