

10/26 Macquarie Street, Barton, ACT 2600



Sold Unit

Friday, 3 May 2024

10/26 Macquarie Street, Barton, ACT 2600

Bedrooms: 2

Bathrooms: 1

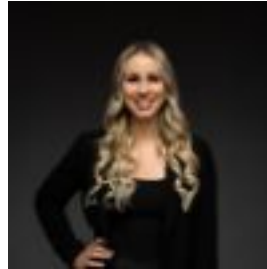
Parkings: 1

Area: 105 m2

Type: Unit



Tom Wiggins
0468771763



Jaimy Butler
0411957736

\$732,000

What you see: A lifestyle that only a Barton address can offer. Tailored to the location offering convenience, connectivity, and comfort, all within walking distance to restaurants, bars, cafes and shops. What we see: Focussed on lifestyle. See more: Designed by renowned architect, Gary Willemsen. Situated in the popular 'Macquarie Court' development. Positioned on level one with tree-lined street views. Kitchen features cooktop, oven, dishwasher and ample storage. Multiple living areas. Bedrooms include walk-in robe. Bathroom features wall-to-ceiling tiles and bath. Reverse-cycle heating and cooling. Intercom access. One secure car space with storage cage. Communal recreational area. Within walking distance to shops, restaurants, bars and cafes. Within 8 minutes walk to Telopea Park. Within 8 minutes walk to Charles Sturt University. Within 9 minutes walk to Lake Burley Griffin. Within 14 minutes walk to Old Bus Depot Markets. Within 4 minutes drive to Kingston Shops. Within 7 minutes drive to the Australian National University. Within 7 minutes drive to Canberra CBD. Within 8 minutes drive to Canberra Airport. Total house area: 105m². Living area: 97m². Balcony: 8m². Built: 1985. EER: 6.0. Rates: \$3,050 p.a. Land tax: \$3,812 p.a. Body corporate: \$4,190 p.a. Rental appraisal: \$680 - \$720 p.w. Disclaimer: Please note the property will not be marked under offer and inspections will not cease until the exchange of contracts has taken place. The above figures are approximate only. The material and information contained within this marketing is for general information purposes only. HIVE Property does not accept responsibility and disclaim all liabilities regarding any errors or inaccuracies contained herein. You should not rely upon this material as a basis for making any formal decisions. We recommend all interested parties to make further enquiries.