

10/6 Belmont Ave, Wollstonecraft, NSW 2065

HOLMES|ST.CLAIR

Sold Apartment

Sunday, 13 August 2023

10/6 Belmont Ave, Wollstonecraft, NSW 2065

Bedrooms: 2

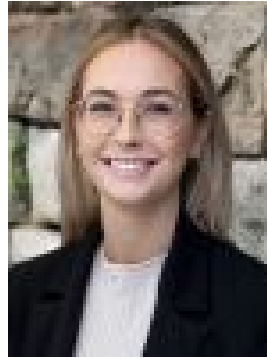
Bathrooms: 1

Parkings: 1

Type: Apartment



Sean St Clair
0289648880



Emma Bell
0434278272

Contact agent

Freshly renovated to meticulous standards with brand new interiors that have never been lived in, this top floor apartment is a cut above the rest. It's light-filled and lovely with two separate balconies and a breathtaking panorama that captures the Harbour Bridge, Anzac Bridge and Iron Cove Bridge. The functional floor plan enjoys complete separation between the living spaces and bedrooms. Peaceful and private yet wonderfully convenient, it's a 5-minute stroll to local shops, cafes and rail, as well as Smoothey Park and bushwalking tracks. It's also a 2-minute drive to Waverton village and Crows Nest's café society. Complete with garaging, a storeroom and undercover access, this immaculate apartment is simply divine. - Open plan indoor/outdoor design with timber flooring - Roomy living/dining flows balcony with northerly aspect - Kitchen with stone bench tops and a breakfast bar - New high-end Bosch appliances including dishwasher - Sizeable bedrooms with built-ins, main with balcony - Both bedrooms enjoy elevated three-bridge panorama - Stylish new bathroom, fully tiled, frameless glass shower - Garaging with undercover access, adjoining storeroom - 500m stroll to Wollstonecraft rail, shops, cafes and park - Convenient to Crows Nest shops, eateries and nightlife