

10 Barrington Circuit, Waterford, Qld 4133



House For Sale

Friday, 3 May 2024

10 Barrington Circuit, Waterford, Qld 4133

Bedrooms: 4

Bathrooms: 2

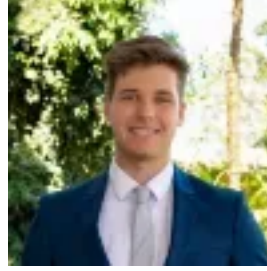
Parkings: 2

Area: 665 m2

Type: House



SELENE BRUYNZEELS
0738076334



ADAM JONES
0738076334

CONTACT AGENT

Welcome to your spacious sanctuary at 10 Barrington Circuit in Waterford! This expansive family home welcomes you with high ceilings and an abundance of space throughout, providing an atmosphere of grandeur and comfort. With four bedrooms and four inviting sitting areas, there's room for everyone to unwind and enjoy moments of togetherness. The recently renovated shaker-style kitchen stands as the heart of the home, providing both style and functionality. Additionally, both the stylish ensuite and main bathroom have also undergone renovations, now featuring larger showers and sleek designs. Tucked away from main roads, this home offers peace while still being close to parks, supermarkets, and Canterbury College, catering to the needs of growing families seeking convenience and community. Embrace the opportunity to create lasting memories in this ideal haven tailored for family living.

FAST FACTS:

- 4 x Bedrooms
- 2 x Bathrooms
- 4 x Living Areas - see specifics below
- Double Garage
- 665m² Block Size
- High Ceilings - 2.7m High
- Solar Panels - 6.6Kw system

THE FINER DETAILS

- Recently renovated, the massive shaker-style kitchen boasts an elongated island bench and an abundance of storage! It is equipped with a large free-standing oven featuring a 5-burner gas cooktop, along with a convenient walk-in pantry.
- Easy-to-maintain timber floors throughout all four bedrooms and secondary living area, adding a cosy touch of warmth to the space.
- LARGE tinted windows for privacy and sun protection, complemented by security doors and windows for enhanced safety throughout the property.
- Side access with ample space for a caravan or a boat, providing convenient storage options.

FOUR LIVING AREAS!!

- Main Living Area - generously sized and seamlessly integrated into the open-plan kitchen, living, and dining space, complete with air-conditioning and a ceiling fan.
- Multi-Purpose Area - seamlessly connected to open plan living and dining via a cut-out dividing wall, ensuring abundant natural light flows throughout the space.
- Secondary Living Area - adjacent to kitchen, featuring easy-to-maintain timber floors for a touch of warmth.
- Teenagers' Retreat - conveniently adjoining all secondary bedrooms, equipped with air-conditioning and a ceiling fan, this space offers a comfortable and private haven.

INSIDE FEATURES:

- SPACIOUS master suite with outdoor access through sliding doors, boasting a luxurious open, NEW ensuite and an expansive walk-in wardrobe.
- 3 x Secondary Bedrooms - 2-bedrooms with built-in wardrobes and ceiling fans, while 1-bedroom offers a walk-in wardrobe and a ceiling fan.
- LARGE open-plan kitchen, living, and dining area seamlessly extends outside through sliding doors, creating a perfect indoor-outdoor living experience.
- Newly renovated, the shaker-style kitchen combines style with practicality, providing plenty of storage and bench space.
- Additionally, you'll find cabinets on either side of the elongated kitchen island bench.
- Laundry room offers plenty of space and storage solutions with overhead shelves.
- Main bathroom is conveniently located near all secondary bedrooms and features a bathtub and separate toilet room.

OUTDOOR FEATURES:

- 665m² Block Size.
- West facing, ensuring cooler temperatures for the master bedroom and patio throughout the day.
- Undercover patio area offers a serene spot for outdoor relaxation - you won't be disturbed by the glaring afternoon sun!
- Convenient side-access on both sides of the property, with one side offering an ideal space for storing vehicles such as a caravan or boat.
- Beautifully presented gardens enhance both the front and back of the property.
- Located near parks and a short drive to the nearest shopping centre.

LOCATIONS NEARBY:

- Canterbury College - 1.1km
- Bethania Lutheran Primary School - 3.5km
- Trinity College - 8.3km
- Woodlands District Park - 700m
- Holmview Central Shopping Centre - 2.7km
- Bunnings Bethania - 2.8km
- Closest Bus Stop - 9 min walk
- Gold Coast - Roughly 40 mins
- Brisbane CBD - Roughly 30 mins

Don't miss the chance to make this property your own! Contact Selene or Adam for more information.

-Disclaimer: All information contained herewith, including but not limited to the general property description, price and the address, is provided to Ray White Beenleigh by third parties. We have obtained this information from sources we believe to be reliable; however, we cannot guarantee its accuracy. The information contained herewith should not be relied upon and you should make your own enquiries and seek advice in respect of this property or any property on this website.