

10 Bethell Avenue, Parkdale, Vic 3195



Sold House

Friday, 23 February 2024

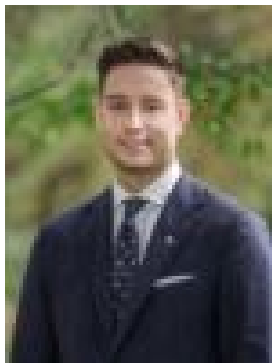
10 Bethell Avenue, Parkdale, Vic 3195

Bedrooms: 3

Bathrooms: 1

Parkings: 3

Type: House



Trent Bourne
0431325917



Amie Goddard
0395855667

\$1,480,000

The purchaser will benefit from an illustrious position within walking distance of Parkdale station, local shops, and the Bayside private school belt. Adding additional value to the area is close proximity to Cheltenham village, Southland SC, and The Concourse. Placed along one of Parkdale's finest avenues, this is an opportunity not to be missed by families, builders, renovators, or yield-minded investors. Its original interiors could be modernised, its generous dimensions extended, or its retro-charm preserved. Alternatively, one can start anew with a luxury home build (STCA). The floor plan naturally centres around the kitchen. It connects through three separate points to the entry foyer, dining zone, and east-oriented sunroom. Along with a main living zone and a covered alfresco, deep rear gardens offer additional entertaining space. On the market for the first time in its 80 year history, this tightly-held property is the result of careful care and attention across generations.