

10 Broome Road, Edmondson Park, NSW 2174

House For Sale

Saturday, 23 December 2023



10 Broome Road, Edmondson Park, NSW 2174

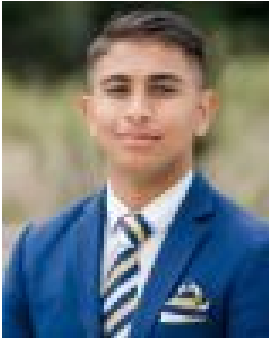
Bedrooms: 5

Bathrooms: 3

Parkings: 2

Area: 463 m2

Type: House



Suprem Lamsal



Murari Lamsal
0433755012

CONTACT AGENT

Murari Lamsal & Suprem Lamsal from Expert Estate Agents Ingleburn are proud to present this family home located in the highly sought-after area of Edmondson Park, in the booming Sydney Southwest region. Sitting on a Beautiful 463m² parcel of land, sophisticated in style and thoughtfully designed throughout, this beautifully finished home is light and bright and offers open-plan living with outdoor space with an amazing backyard, perfect for the entertainer. Accommodation comprises 5 bedrooms, all of which are appointed with built-in wardrobes and the master bedroom featuring a walk-in and Ensuite. Features Include: 463m² Land Light-filled open-plan living Luxuriously appointed and finished to the highest standards Vast layout enjoys effortless indoor/outdoor transitions Additional bedroom located on the ground floor with built-in Large kitchen benchtop with ample storage throughout + walk-in pantry Kitchen Features 20mm Stone benchtop Alfresco fitted with outdoor Kitchen fitted with Sink & Stove & extended pergola Master bathroom features floor to ceiling tiles located and freestanding bathtub 9KW Solar System Landscaped Gardens Family sized Rumpus with balcony access 2 well sized living rooms on the ground floor Separate bathroom located on the ground floor with floor to ceiling tiles Down-lights throughout the property Ducted air conditioning Master suite complete with walk-in robe, ensuite & balcony And many more.... Proximities: 5-minute drive to the Edmondson Park train station 5-minute drive to the Ed Square Shopping Centre 4-minute drive to The Australian Islamic House Masjid Complete with internal access to a double garage, this extraordinary residence is positioned within walking distance to Ed Square Shopping Centre, childcare facilities and Ed. Park train station. Easy access to M5 and M7 motorways. If you are Interested in this amazing property please contact: Murari Lamsal: 0433 755 012 Suprem Lamsal: 0426 577 272 Disclaimer: The information presented has been furnished from sources we deem to be reliable. We have not verified whether the information is accurate and do not accept any responsibility to any person and do no more than pass it on. All interested parties should rely on their own enquiries to determine the.